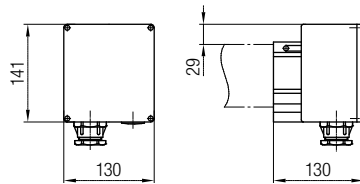


# End Feeds and End Caps

## End Feed up to 60A for CS (Continuous Strip), PL (Plug-in Type) and AN (Angle Clamping)

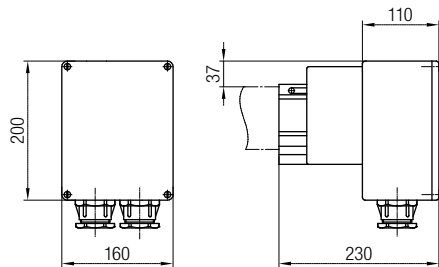


### Technical details

- Housing material: plastic
- Cable lugs included
- For joint systems PL and AN few modifications are required on-site.
- Further details see installation instructions program 0842

Order No.	Poles up to	Gland	Nom. Current [A]	Cable Lug [mm <sup>2</sup> ]	Weight [kg]
084251-051	5	Pg 21	35	10	0.71
084251-052		Pg 29	60	16	0.71
084251-071	7	Pg 21	35	10	0.84
084251-076		Pg 29 + Pg 11	60	16	0.85

## End Feed up to 100A for CS (Continuous Strip) and up to 140A for JT (Joint Clamping)



### Technical details

- Housing material: plastic
- Cable lugs included

Order No.	Poles up to	Gland	Nom. Current [A]	Cable Lug [mm <sup>2</sup> ]	Weight [kg]
084251-053x60	5	Pg 36	100	25	1.30
084251-053x70		Pg 36	140	35	1.30
084251-077x60	7	1 x Pg 36; 1 x Pg 11	100	25 <sup>1)</sup>	1.35
084251-077x70		1 x Pg 36; 1 x Pg 11	140	35 <sup>2)</sup>	1.35

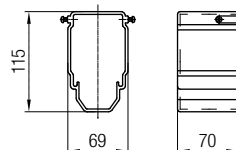
1) 4 cable lugs 25 mm<sup>2</sup> + 3 cable lugs 2.5 mm<sup>2</sup>

2) 4 cable lugs 35 mm<sup>2</sup> + 3 cable lugs 2.5 mm<sup>2</sup>

## End Cap



Standard type



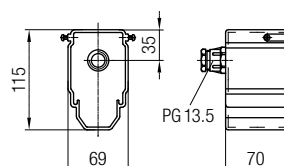
Order No. 084271

### Technical details

- Material: plastic
- Weight: 0.13 kg



Type for connection of bus terminating resistors



Order No. 084272

### Technical details

- Material: plastic
- Weight: 0.14 kg