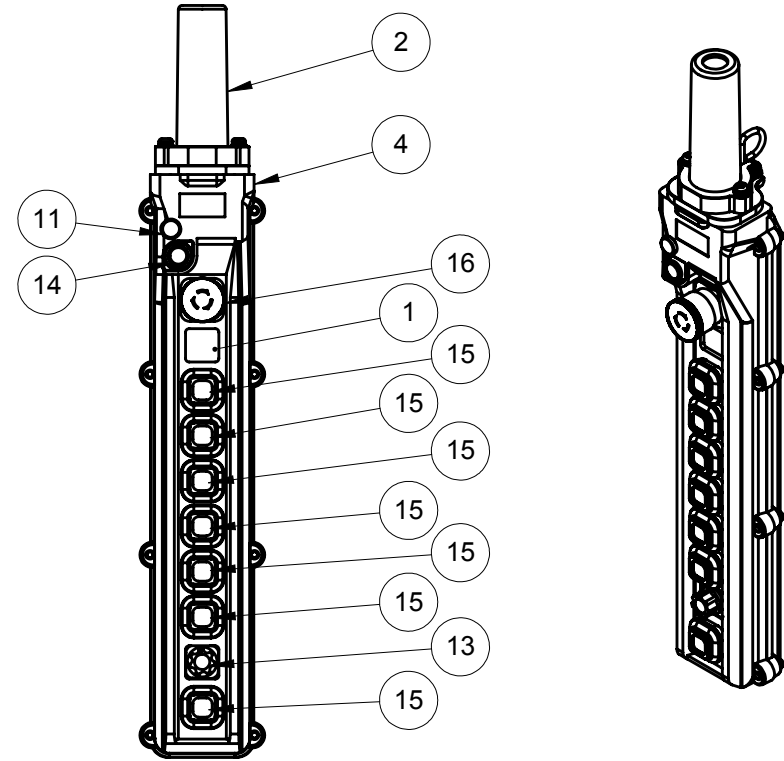


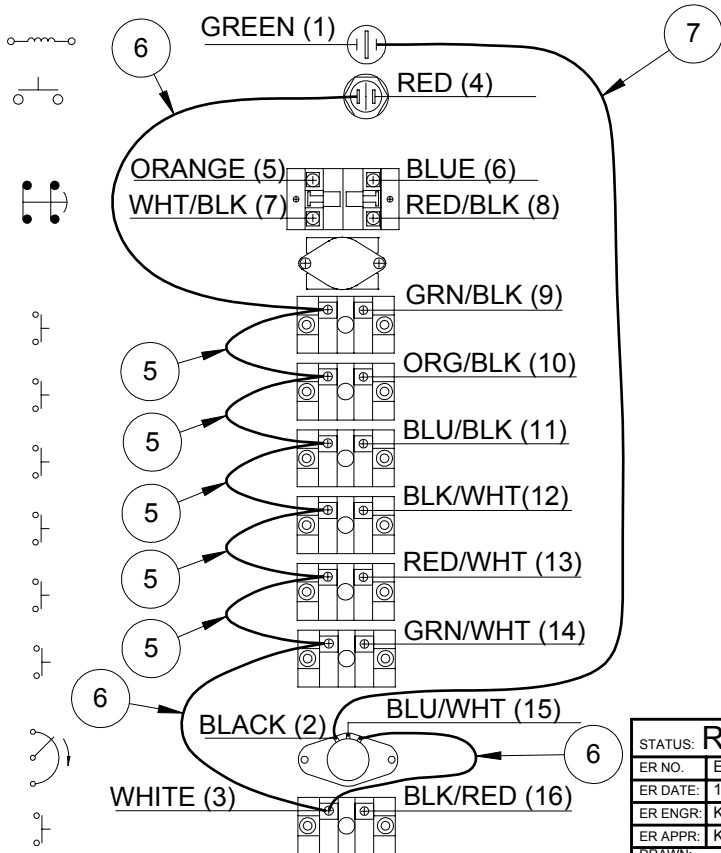
**NOTES:**

1. DO NOT ASSEMBLE BUSHING TO PENDANT, SEND WITH.
2. ASSEMBLE SWITCHES AND WIRE JUMPERS TO PENDANT AS SHOWN.
3. WIRING SHOWN FOR REEL WIRING ONLY.
4. SEND ALL SPARE PARTS WITH EACH PENDANT.
5. SEND A COPY OF THIS DRAWING WITH PENDANT.
6. THIS PENDANT IS NOT UL LISTED DUE TO BEING WIRED TO A REEL.



**SWITCH SCHEMATIC**

**SWITCH VIEWED FROM BACK SIDE**



16	XA-37124	SWITCH MUSH HD 30MM RED (2) B BLOCKS KI	1	PC
15	XA-34306	SWITCH MOM 1NO SGL KITTED	7	PC
14	XA-34312	SWITCH HORN 12MM PB 1NO USE IN 19MM HOLE	1	PC
13	XA-34314	RESISTOR VARIABLE 5K KITTED	1	PC
12	XA-960400	MANUAL PNDNTS 80 SERIES	1	PC
11	XA-36081	LIGHT PILOT 10MM 120VAC RED 19MM HOLE	1	PC
10	XA-34327	LEGEND SHEET VERTICAL SELECTOR	1	PC
9	XA-34326	LEGEND SHEET BTN 80 SERIES	2	PC
8	XA-35299	LEGEND MUSHROOM STOP	1	PC
7	XA-50457C	JUMPER WIRE STRIPPED BOTH ENDS 14.0 LG BLK	1	PC
6	XA-PEN1066	JUMPER WIRE 18 AWG 6.0 LG WHT TERM	3	PC
5	XA-50677	JUMPER 18 AWG (2) RING TERM WHT 6.0 LG	5	PC
4	XA-34286	ENCLOSURE 10 BTN LGE INLET STD BACK ABS	1	PC
3	XA-07853	CABLE LUG 22-18 AWG #10 STUD	12	PC
2	XA-34415	BUSHING CBL 19.3-22.5MM	1	PC
1	XA-34304	BLANK GROM BLIND RUBBER M4 SCRS ST	1	PC
ITEM	MATERIAL NO. 2	DESCRIPTION	QTY.	UNIT

STATUS: <b>RELEASED</b>		DESCRIPTION: <b>PENDANT 10 BTN 37124 (7) 34306 5K POT</b>	
ER NO:	ECO-13042	UNLESS OTHERWISE SPECIFIED	
ER DATE:	10/28/2019	INTERPRET GEOMETRIC TOLERANCING PER: ASME Y14.5	
ER ENGR:	K COCHRAN	PRIMARY UNITS ARE IN INCH POUND SECONDS	
ER APPR:	K EASTMAN	SECONDARY UNITS IN MILLIMETERS KILOGRAMS METERS	
DRAWN:	K COCHRAN	TOLERANCES ARE AS FOLLOWS	
APPR:	K EASTMAN	DECIMAL =	
		XXX ± 0.1 IN (2.5 MM)	
		X.XX ± 0.03 IN (0.8 MM)	
		X.XXX ± 0.010 (0.25 MM)	
		ANG. ± 1°	
		FRACTION = 1/16	
		THREAD CLASS: 2	
		ALL DIMENSIONS GREATER THAN 24.00 INCHES HAVE A TOLERANCE OF ± .063 IN UNLESS OTHERWISE SPECIFIED	
MATERIAL NO. 2:		PROPRIETARY AND CONFIDENTIAL	
MATERIAL NO. 2:		This drawing and the information shown constitute trade secret and confidential property of Conductix, Inc. It is subject to recall and is loaned for use only in connection with the authorized manufacture or installation of Conductix, Inc. products, and on the condition that it will be treated as confidential and will not be disclosed, published or reproduced in whole or in part, or permitted to be viewed or used by any other party, without specific written permission. Receipt and use of the drawing and information constitutes acceptance and agreement to the above.	
MATERIAL NO. 2:		10102 F Street Omaha, NE 68127 800-521-4888	
MATERIAL NO. 2:		CONDUCTIX wampier DELCAMAX GROUP	
MATERIAL NO. 2:		XA-590625	
MATERIAL NO. 2:		REV 0	
SIZE A	SCALE: 1:5	WEIGHT(REF): 1.90 LB	MAT'L:
SHEET 1 OF 1			