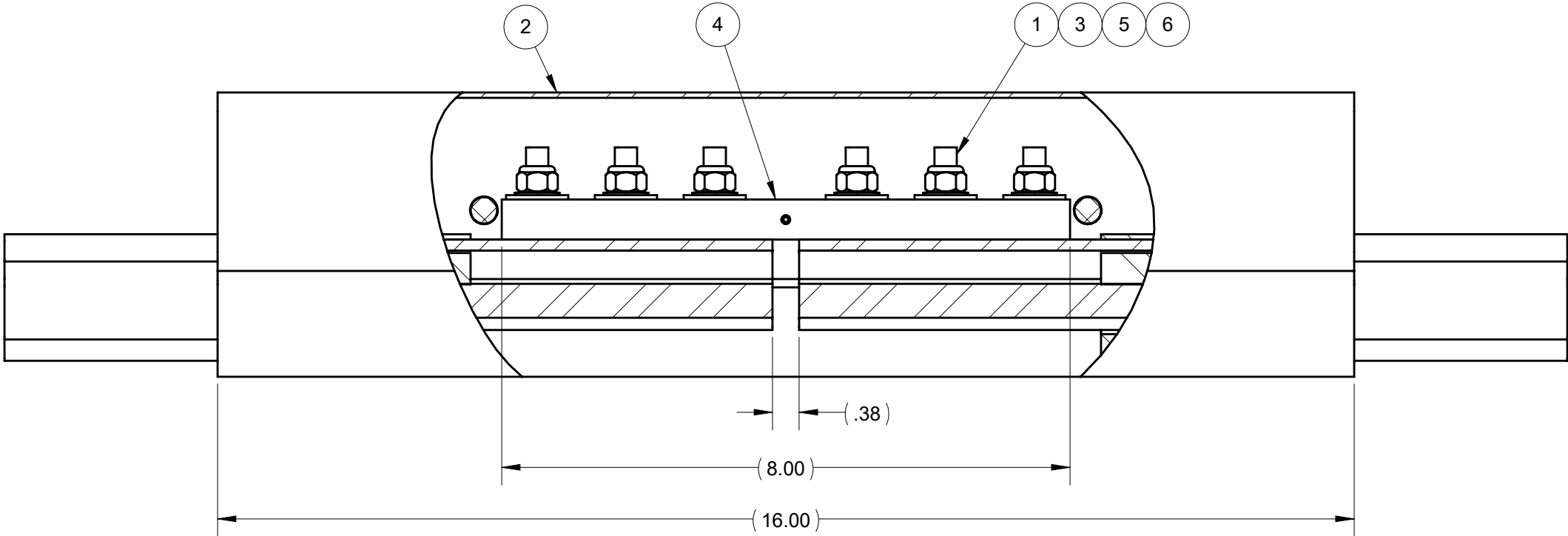
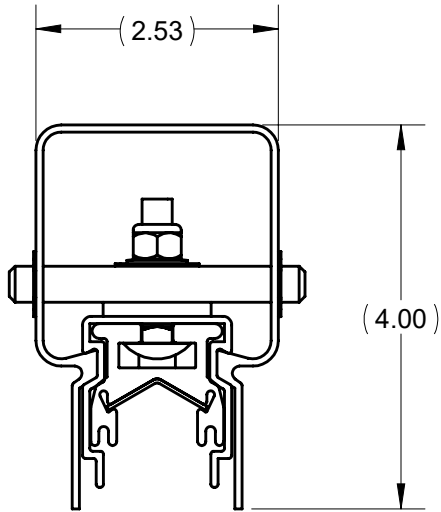


NOTES:


1. THIS ASSEMBLY USED ON INSTALLATIONS WITH SYSTEM VOLTAGES NOT EXCEEDING 600V.

FIELD INSTALLATION NOTES:

2. APPLY A SMALL AMOUNT OF ANTI-SEIZE TO HARDWARE (SUPPLIED BY OTHERS).
3. TORQUE NUTS TO 15-17 FT-LBS.
4. SNAP COVER INTO PLACE.



6	XA-10565	WASHER 5/16 FL 1.06 PS	6	PC
5	XA-09506	WASHER 5/16 BELL .69 OD PS	6	PC
4	XA-36822	SPLICE ISO 700A 8.00 LG	1	PC
3	XA-09463	NUT 5/16-18 HEX FLEXLOC PS	6	PC
2	XA-24560	COVER SPL ASSY 700A EXT TEMP	1	PC
1	XA-10357	BOLT 5/16-18 X 1.50 CRG PS	6	PC
ITEM	MATERIAL NO. 2	DESCRIPTION	QTY.	UNIT

STATUS: RELEASED		DESCRIPTION: ISOLATOR SPLC ASSY 700A EXT TEMP 7			
ER NO.	ECO-50610	<div>UNLESS OTHERWISE SPECIFIED INTERPRET GEOMETRIC TOLERANCING PER: ASME Y14.5 PRIMARY UNITS ARE IN INCH POUND SECONDS SECONDARY UNITS IN MILLIMETERS KILOGRAMS SECONDS TOLERANCES ARE AS FOLLOWS DECIMAL: X.X ± 0.1 IN (2.5 MM) X.XX ± 0.03 IN (0.8 MM) X.XXX ± 0.010 (0.25 MM) ANG. ± 1° FRACTION: 1/16 THREAD CLASS: 2 ALL DIMENSIONS GREATER THAN 24.00 INCHES HAVE A TOLERANCE OF ± .063 IN UNLESS OTHERWISE SPECIFIED</div> <div>CAD SYSTEM: SOLIDWORKS MINIMUM MACHINED SURFACE 250</div> <div>PROPRIETARY AND CONFIDENTIAL This drawing and the information shown constitute trade secret and confidential property of Conductix, Inc. It is subject to recall, and is loaned for use only in connection with the authorized manufacture or installation of Conductix, Inc. products, and on the condition that it will be treated as confidential and will not be disclosed, published or reproduced in whole or in part, or permitted to be viewed or used by any other party, without specific written permission. Receipt and use of the drawing and information constitutes acceptance and agreement to the above.</div> <div>10102 F Street Omaha, NE 68127 800-521-4888</div> <div></div>	<div>10102 F Street Omaha, NE 68127 800-521-4888</div>		
ER DATE:	10/24/2022				
ER ENGR:	J NEUMANN				
ER APPR:	R FROST				
DRAWN:	W HAUPTS				
APPR:	D TOWNSEND	MATERIAL NO. 2: XA-24564		REV 7	
		SIZE B	SCALE: 1:2	WEIGHT(REF): 3.99 LB MAT'L:	SHEET 1 of 1