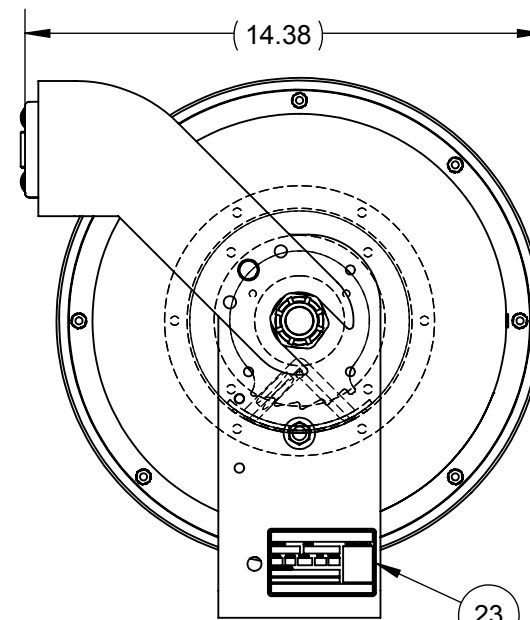
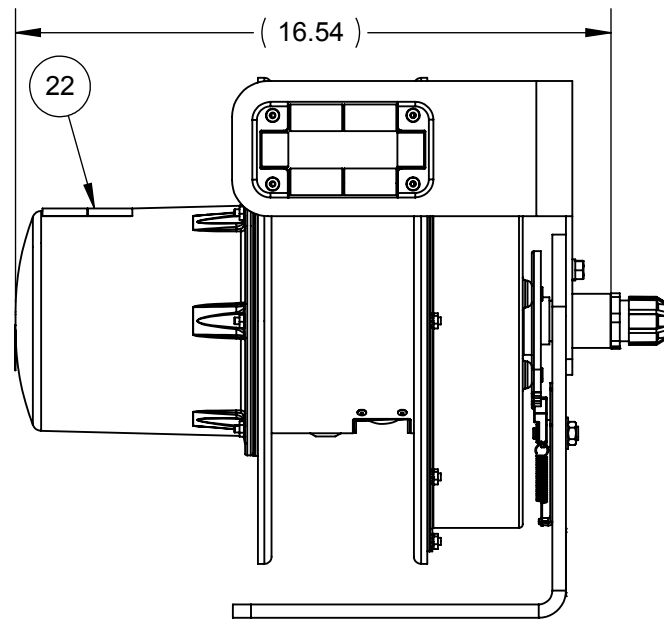
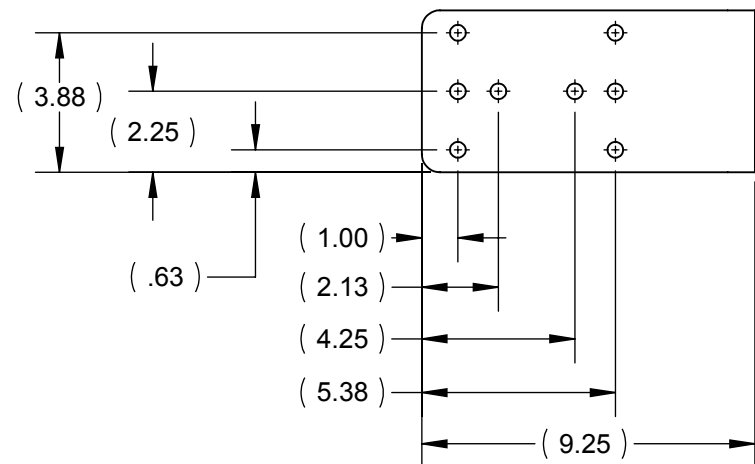
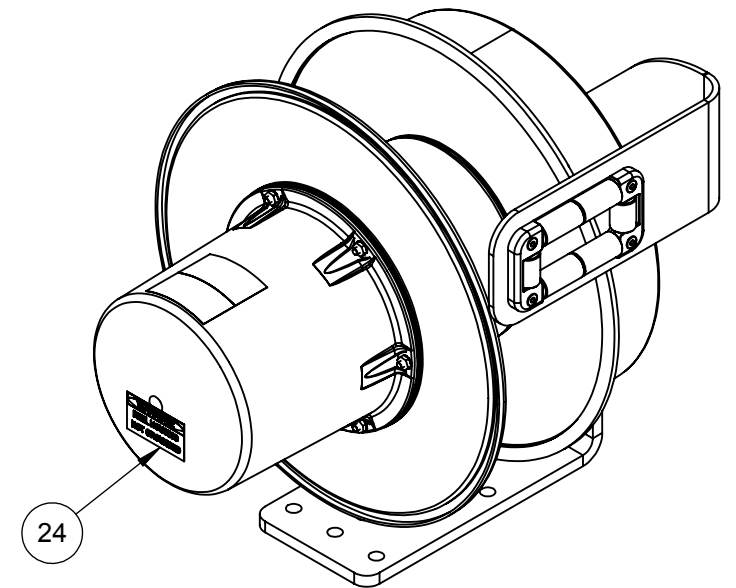


SLIP RING ORIENTATION



DRUM/RATCHET ORIENTATION



NOTES:

1. THIS REEL IS DESIGNED FOR 40FT ACTIVE TRAVEL OF CUSTOMER'S 16/5+12/3 SJEOW COMPOSITE CABLE IN A STRETCH APPLICATION AND HAS AN ISOLATED SLIP RING.
2. THIS REEL IS SUPPLIED WITHOUT CABLE.
3. CUSTOMER TO DETERMINE SLIP RING WIRING.
4. THIS REEL HAS A MAXIMUM RATING OF 300 VOLTS, NEMA 4.
5. ENSURE THAT RATCHET TEETH ON SPRING MOTOR & CABLE OPENING ON DRUM ASSEMBLY ALIGN BEFORE SECURING.
6. WHEN SECURING SLIP RING TO SHAFT, MAKE SURE DRIVE PIN ENGAGES DRIVE BASE AND THE #3 BRUSH IS ORIENTED OVER THE CABLE ENTRANCE.
7. ATTACH MANUAL TO DRUM OR CABLE BEFORE SHIPPING.
8. THIS REEL IS NOT UL LISTED.

ITEM	MATERIAL NO. 2	DESCRIPTION	QTY.	UNIT
25	XA-10043	WASHER 5/16 LK SPLIT PS	1	PC
24	XA-39208	TAG WARNING: REEL HSG NO GRD	1	PC
23	XA-34739	STICKER PR SERIAL NUMBER	1	PC
22	XA-34791	STICKER DANGER HIGH VOLTAGE ENG/FR	1	PC
21	XA-35003	SPRING CRTG PARALLEL K SCHED	1	PC
20	XA-PR35-08G	SLIP RING ASSY 35A 8C ISO	1	PC
19	XA-PR47	SHAFT CPLG	1	PC
18	XA-547539	SEAL O-RING 6.50 OD X 6.25 ID X 1/8 WD	1	PC
17	XA-03688	PLUG CAPLUG BPF 1/2	1	PC
16	XA-35014	PACKING FOAM TOP 1400 PR FORMED	1	PC
15	XA-35013	PACKING FOAM BOT 1400 PR FORMED	1	PC
14	XA-08386	NUT 10-24 KEPS	10	PC
13	XA-962000	MANUAL 1400 POWERREEL	1	PC
12	XA-PR87-4	GUIDE ARM SUB ASSY SCHED	1	PC
11	XA-PR57	GASKET RUBBER DRUM 6.218 OD X 4.750 ID	1	PC
10	XA-PR55	GASKET RUBBER 7.500 OD X 6.218 ID	1	PC
9	XA-PR08	FLANGE FRONT 1400 PDRCYEL	1	PC
8	XA-PR86-4BLK	DRUM ASSY 4.5 IN BK	1	PC
7	XA-547536D	COVER SLIP RING 1.5B L= 6.60	1	PC
6	XA-08526	CABLE TIE 8-8.5 LG BK NYL UV STABLE	3	PC
5	XA-PR90-3	CABLE GLAND 1.00 (.500-.750)	2	PC
4	XA-35012	BOX CARDBOARD 1400 SERIES	1	PC
3	XA-09522	BOLT 5/16-18 X .63 HEX GR5 PS	1	PC
2	XA-PR04A-2	BASE ASSY 1400 SCHED	1	PC
1	XA-34474	BALL STOP .44-.62 OD CBL (DONUT)	1	PC

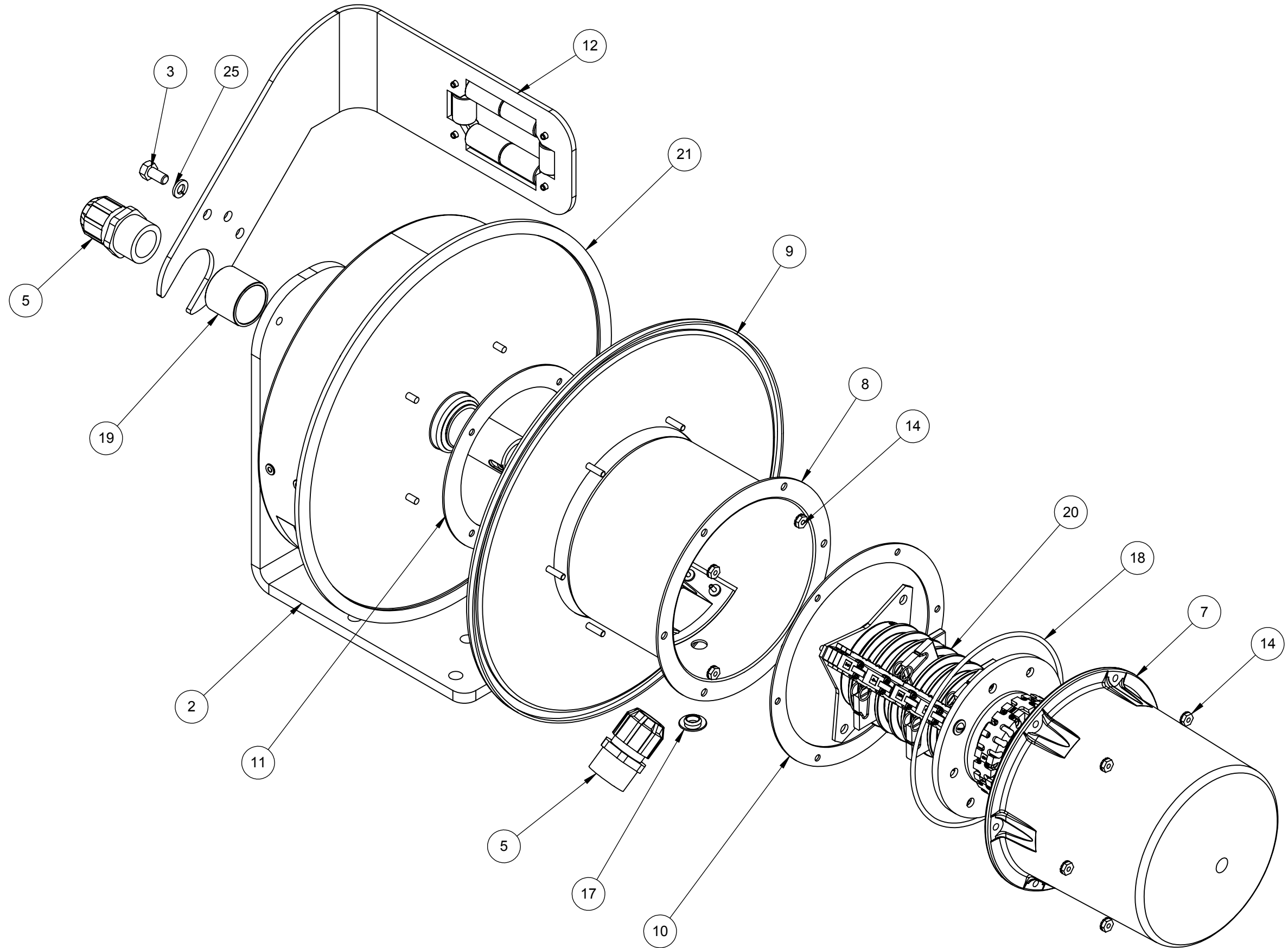
STATUS: RELEASED	DESCRIPTION: REEL PR PBKP1605/1203-40 S ISO NO CBL
ER NO: ECO-43605	UNLESS OTHERWISE SPECIFIED INTERPRET GEOMETRIC TOLERANCING PER: ASME Y14.5
ER DATE: 05/16/2022	PRIMARY UNITS ARE IN INCH POUND SECONDS SECONDARY UNITS ARE IN MILLIMETERS KILOGRAMS SECONDS TOLERANCES ARE AS FOLLOWS
ER ENGR: K COCHRAN	DECIMAL: X.X ± 0.1 IN (2.5 MM)
ER APPR: D SAMPSON	X.XX ± 0.03 IN (0.8 MM)
DRAWN: K COCHRAN	X.XXX ± 0.010 (0.25 MM)
APPR: D SAMPSON	ANG. ± 1°
	FRAC. ± 1/16
	THREAD CLASS: 2
	ALL DIMENSIONS GREATER THAN 24.00 INCHES HAVE A TOLERANCE OF ± .063 IN UNLESS OTHERWISE SPECIFIED

PROPRIETARY AND CONFIDENTIAL
 This drawing and the information shown constitute trade secret and confidential property of Conductix-Wampler, Inc. It is subject to recall, and is loaned for use only in connection with the authorized manufacture or installation of Conductix-Wampler, Inc. products, and on the condition that it will be treated as confidential and will not be disclosed, published or reproduced in whole or in part, or permitted to be viewed or used by any other party, without specific written permission. Receipt and use of the drawing and information constitutes acceptance and agreement to the above.

CAD SYSTEM: SOLIDWORKS
 MINIMUM MACHINED SURFACE
 250

MATERIAL NO. 2: **XA-600218**

SIZE **B** SCALE: 3:16 WEIGHT(REF): 60.72 LB MAT'L: -- SHEET 1 OF 2



STATUS: RELEASED	DESCRIPTION: REEL PR PBKP1605/1203-40 S ISO NO CBL	PROPRIETARY AND CONFIDENTIAL	
ER NO: ECO-43605	UNLESS OTHERWISE SPECIFIED INTERPRET GEOMETRIC TOLERANCING PER: ASME Y14.5	This drawing and the information shown constitute trade secret and confidential property of Conductix-Wampler, Inc. It is subject to recall, and is loaned for use only in connection with the authorized manufacture or installation of Conductix-Wampler, Inc. products, and on the condition that it will be treated as confidential and will not be disclosed, published or reproduced in whole or in part, or permitted to be viewed or used by any other party, without specific written permission. Receipt and use of the drawing and information constitutes acceptance and agreement to the above.	
ER DATE: 05/16/2022	PRIMARY UNITS ARE IN INCH POUND SECONDS SECONDARY UNITS ARE IN MILLIMETERS KILOGRAMS SECONDS		
ER ENGR: K COCHRAN	TOLERANCES ARE AS FOLLOWS	MATERIAL NO. 2:	
ER APPR: D SAMPSON	DECIMAL: X.X ± 0.1 IN (2.5 MM) X.XX ± 0.03 IN (0.8 MM) X.XXX ± 0.010 (0.25 MM)		
DRAWN: K COCHRAN	ANG: ± 1°		
APPR: D SAMPSON	THREAD CLASS: 2		
	ALL DIMENSIONS GREATER THAN 24.00 INCHES HAVE A TOLERANCE OF ± .063 IN UNLESS OTHERWISE SPECIFIED		
		SIZE B	SCALE: 5:16
		WEIGHT(REF): 60.72 LB	MAT'L: --
		10102 F Street Omaha, NE 68127 800-521-4888	
		XA-600218	REV 1
		SHEET 2 OF 2	