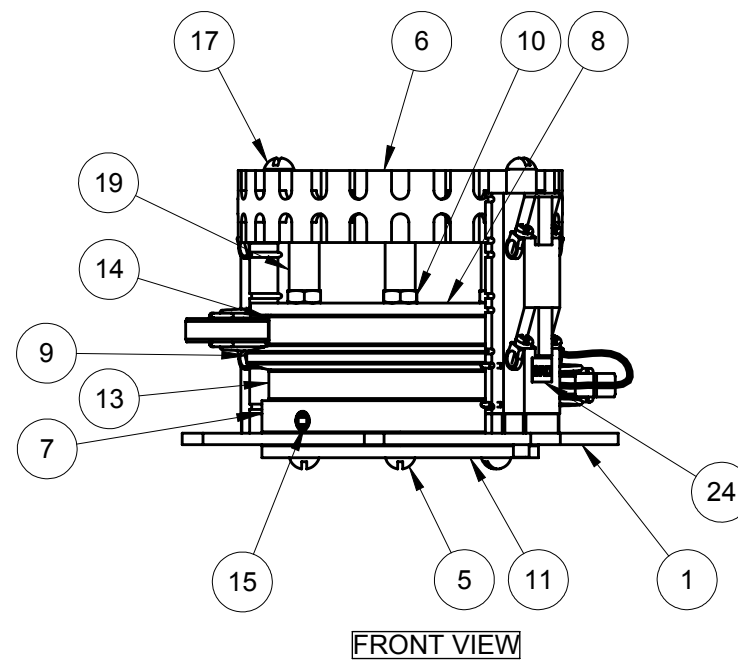
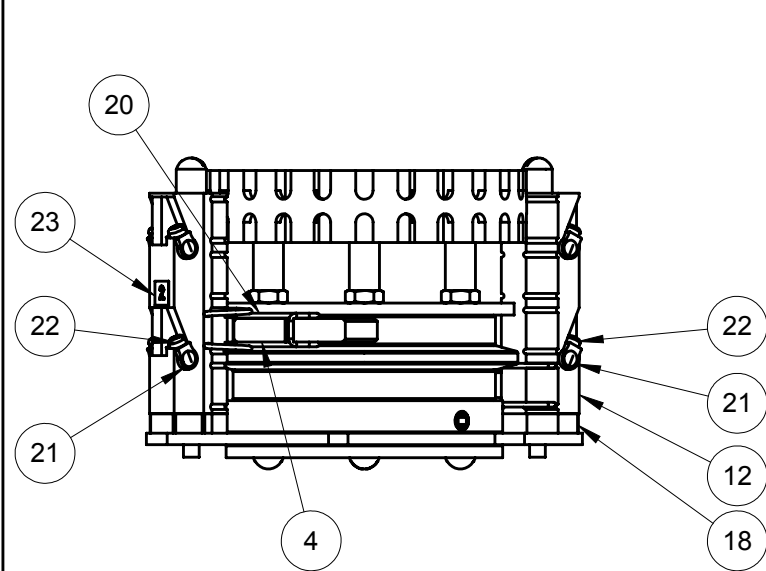
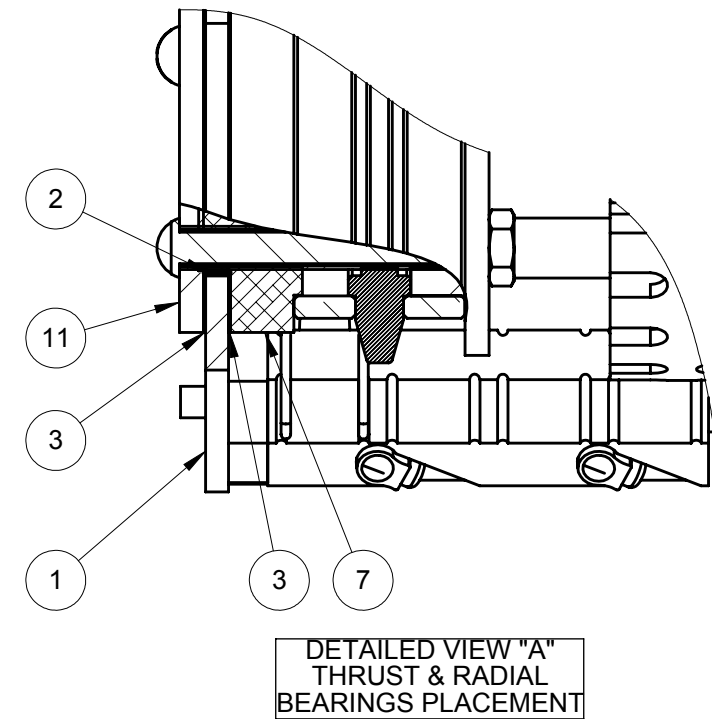
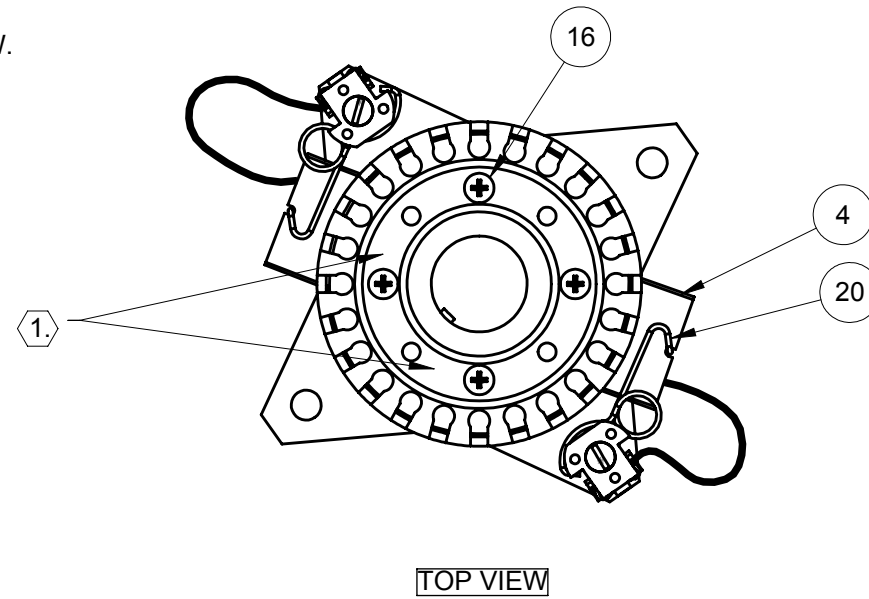


NOTES:

1. WHEN ASSEMBLING RINGS, ROTATE SO WIRES ARE ORIENTED AS SHOWN IN TOP VIEW.
2. WHEN ASSEMBLING BRUSH AND BRUSH HOLDER, ALTERNATE AND STAGGER AS SHOWN IN FRONT VIEW.



ITEM	MATERIAL NO. 2	DESCRIPTION	QTY.	UNIT
24	XA-36735	WIRE MARKER GRD VINYL CLOTH	2	PC
23	XA-03536	WIRE MARKER 2 VINYL CLOTH	2	PC
22	XA-04280B	TERMINAL SCREW	8	PC
21	XA-04280A	TERMINAL BODY (8 AWG MAX)	4	PC
20	XA-41019	SPRING HOLDER BRSH	2	PC
19	XA-05457	SPACER 5/16 OD 8-32 TAPPED 3/4 LG NYL	4	PC
18	XA-PR32	SPACER BRSH POST	2	PC
17	XA-R32-3	SCREW 8-32 X 3.00 RHS PS	2	PC
16	XA-08383	SCREW 8-32 X .50 PHP PS	4	PC
15	XA-08030	SCREW 1/4-20 X 1.00 DP PS	1	PC
14	XA-PR82D-AG	RING WIRE SLVR PLTD 4 IN	1	PC
13	XA-PR81D-AG	RING GND WIRE SLVR PLTD 4 IN	1	PC
12	XA-PR34	POST MODULE BRSH	2	PC
11	XA-PR28	PLATE BRG SUP	1	PC
10	XA-10754	NUT 8-32 HEX JAM PS	4	PC
9	XA-33941	INSULATOR 1.50B 35A 600V VL	1	PC
8	XA-R27-4D	INSULATOR 1.50B 35A 0.13 BARR	1	PC
7	XA-PR27	DRIVE COLLAR 1400 SERIES PR	1	PC
6	XA-30017	CORE TERMINAL BLOCK VL RING	1	PC
5	XA-PR83-02	CORE BOLT KIT GRD SLIP RING 2.25 LG	4	PC
4	XA-30088	BRUSH 35A 1.5B CG VL PR	2	PC
3	XA-PR30C	BEARING THRUST SLIP RING	2	PC
2	XA-PR30D	BEARING RADIAL SLIP RING	1	PC
1	XA-PR29	BASE BRUSH POST PS	1	PC

STATUS: RELEASED		DESCRIPTION: SLIP RING ASSY 35A 2C AG	
ER NO.: 76624	UNLESS OTHERWISE SPECIFIED INTERPRET GEOMETRIC TOLERANCING PER: ASME Y14.5		
ER DATE: 09/25/2018	PRIMARY UNITS ARE IN INCH POUND SECONDS SECONDARY UNITS ARE IN MILLIMETERS KILOGRAMS SECONDS		
ER ENGR: J NEUMANN	TOLERANCES ARE AS FOLLOWS		
ER APPR: D SAMPSON	DECIMAL: .0005		
DRAWN: K COCHRAN	09/02/2005	MINIMUM MACHINED SURFACE	250
APPR: R BAUER	09/02/2005	THREAD CLASS: 2	
ALL DIMENSIONS GREATER THAN 24.00 INCHES HAVE A TOLERANCE OF ± .063 UNLESS OTHERWISE SPECIFIED		PROPRIETARY AND CONFIDENTIAL This drawing and the information shown constitute trade secret and confidential property of Conductix-Wipac, Inc. It is subject to recall, and is loaned for use only in connection with the authorized manufacture or installation of Conductix-Wipac products, and on the condition that it will be treated as confidential and will not be disclosed, published or reproduced in whole or in part, or permitted to be viewed or used by any other party, without specific written permission. Receipt and use of the drawing and information constitutes acceptance and agreement to the above.	
MATERIAL NO. 2: XA-PR35-02AG		REV: 5	
SIZE: B	SCALE: 1:2	WEIGHT(REF): 1.37 LB	MATL:



10102 F Street
Omaha, NE 68127
800-521-4888