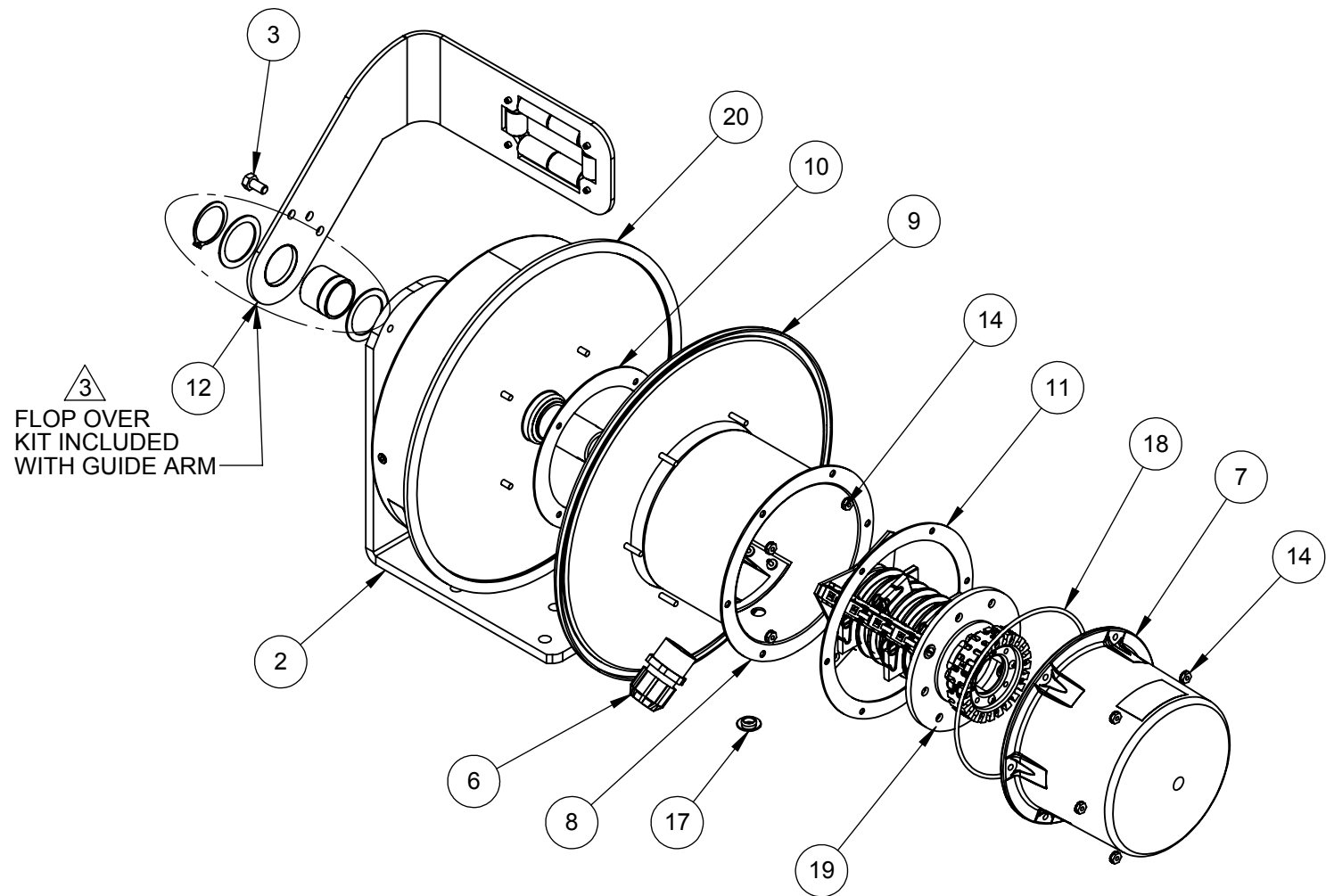
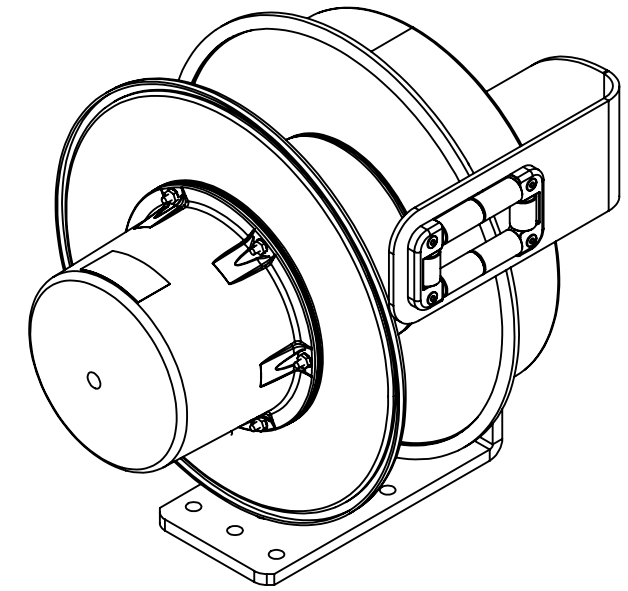


3 NOTES:

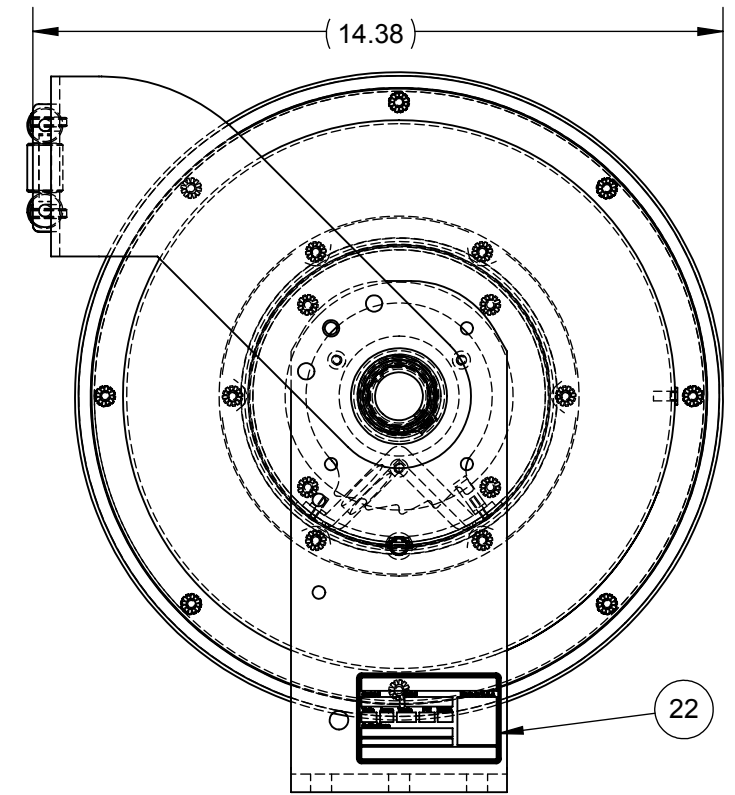
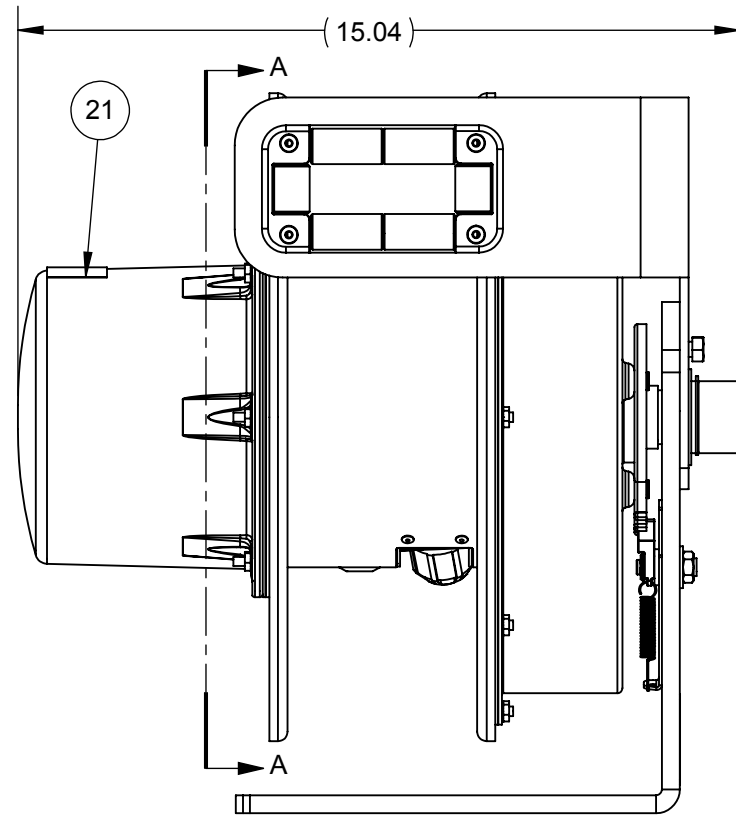
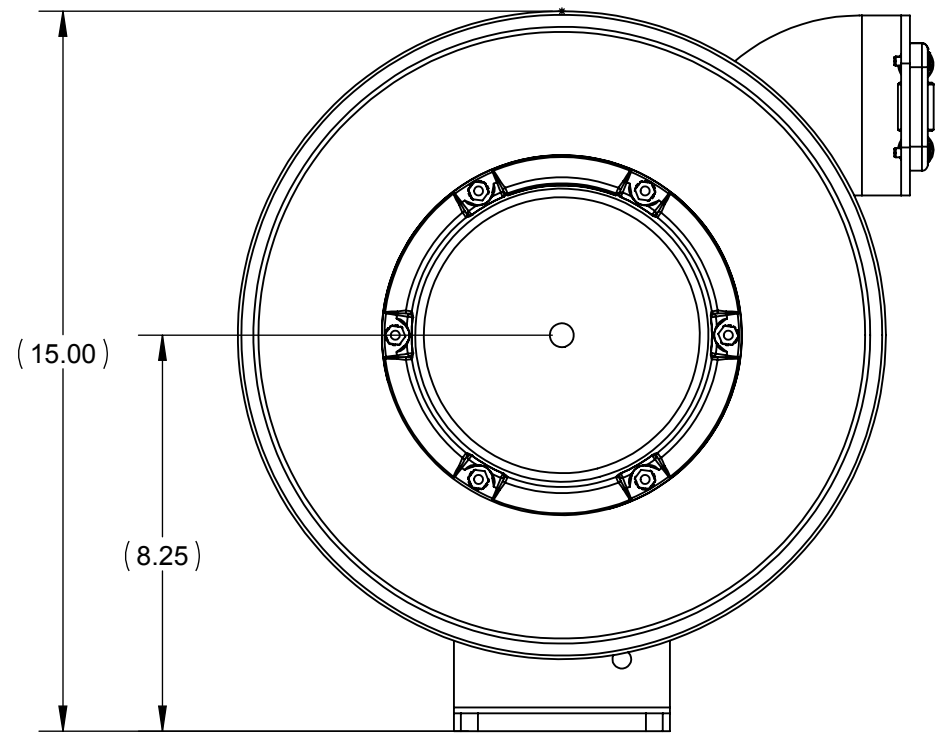
1. ENSURE THAT RATCHET TEETH ON SPRING MOTOR & CABLE ENTRANCE ON DRUM ASSEMBLY ALIGN BEFORE SECURING.
2. THIS REEL HAS A MAXIMUM RATING OF 600 VOLTS AND 7 AMPS, NEMA 4.
3. ATTACH GROUND TAG TO BASE.
4. SECURE IOM TO DRUM OR CABLE PRIOR TO SHIPPING.
5. WHEN SECURING SLIP RING ASSEMBLY TO SHAFT, MAKE SURE DRIVE PIN ENGAGES DRIVE BASE THROUGH HOLE IN DRIVE BASE DIRECTLY BELOW TERMINAL STRIP WITH 4 CONDUCTORS.
6. STRIP OUTER JACKET OF CABLE BACK 11", THEN WIRE CABLE TO SLIP RING ACCORDING TO THE COLOR CODE CHART.
7. INSTALL FLOP OVER GUIDE KIT ACCORDING TO INSTRUCTIONS PROVIDED WITH GUIDE ARM.

WIRING CHART	
WIRE COLOR	RING WIRED TO
GREEN	GROUND
BLACK	#2
WHITE	#3
RED	#4
ORANGE	#5
BLUE	#6
WHITE/BLACK	#7
RED/BLACK	#8



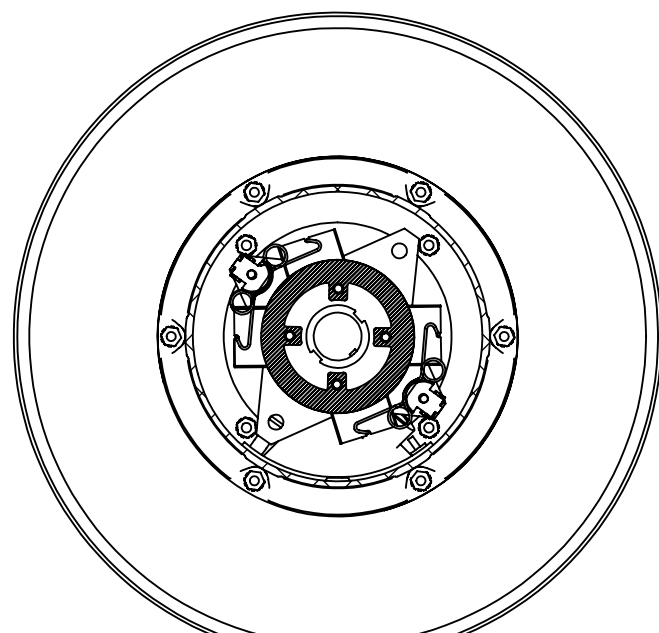
23	XA-35009	TAG GND RING	1	PC
22	XA-34739	STICKER PR SERIAL NUMBER	1	PC
21	XA-34791	STICKER DANGER HIGH VOLTAGE	1	PC
20	XA-PR89	SPRING CRTG SGL J SCHED	1	PC
19	XA-530155	SLIP RING ASSY 35A 8C AG	1	PC
18	XA-547539	SEAL O-RING 6.50 OD X 6.25 ID X 1/8 WD	1	PC
17	XA-03688	PLUG CAPLUG BPF 1/2	1	PC
16	XA-35014	PACKING FOAM TOP 1400 PR FORMED	1	PC
15	XA-35013	PACKING FOAM BOT 1400 PR FORMED	1	PC
14	XA-08386	NUT 10-24 KEPS	10	PC
13	XA-962000	MANUAL 1400 POWERREEL	1	PC
12	XA-PR87-4FGK	GUIDE ARM SUB ASSY 4.5IN FGK YEL	1	PC
11	XA-PR55	GASKET RUBBER 7.500 OD X 6.218 ID	1	PC
10	XA-PR57	GASKET DRUM	1	PC
9	XA-PR08	FLANGE FRONT P/C	1	PC
8	XA-PR86-4BLK	DRUM ASSY 4.5 IN BK	1	PC
7	XA-547536C	COVER SLIP RING 1.5B L= 5.10	1	PC
6	XA-PR90-3	CABLE GLAND 1.00 (.500-.750)	1	PC
5	XA-33021	CABLE 16AWG 8C SOOW-A	52	FT
4	XA-35012	BOX CARDBOARD 1400 SERIES	1	PC
3	XA-09522	BOLT 5/16-18 X .63 HEX GR5 PS	1	PC
2	XA-PR04A-2	BASE ASSY .375 THK SCHED	1	PC
1	XA-34475	BALL STOP .63-.75 OD CBL (DONUT)	1	PC
ITEM	MATERIAL NO. 2	DESCRIPTION	QTY.	UNIT

STATUS: RELEASED		DESCRIPTION: REEL PR PBJ1608-50 L/D CBL FGK	
ER NO. 65019	INTERPRET: GEOMETRIC TOLERANCING PER: ASME Y14.5-1994	PROPRIETARY AND CONFIDENTIAL	
ER DATE: 07/27/2015	UNLESS OTHERWISE SPECIFIED	This drawing and the information shown constitute trade secret and confidential property of Conductix Wampler, Inc. It is subject to recall, and is loaned for use only in connection with the authorized manufacture or installation of Conductix Wampler, Inc. products, and on the condition that it will be treated as confidential and will not be disclosed, published or reproduced in whole or in part, or permitted to be viewed or used by any other party, without specific written permission. Receipt and use of the drawing and information constitutes acceptance and agreement to the above.	
ER ENGR: K COCHRAN	PRIMARY UNITS ARE IN INCH POUND SECONDS	10102 F Street Omaha, NE 68127 800-521-4888	
ER APPR: M BLAIR	SECONDARY UNITS IN MILLIMETERS KILOGRAMS SECONDS	MATERIAL NO. 2: XA-552188	
DRAWN: K COCHRAN	TOLERANCES ARE AS FOLLOWS	REV 3	
APPR: J PASA	DECIMAL: X.X ± 0.1 IN (2.5 MM) X.XX ± 0.03 IN (0.8 MM) X.XXX ± 0.010 (0.25 MM)	WEIGHT(REF): 59.71 LB	
	ANG. ± 1°	MAT'L: --	
	THREAD CLASS: 2	SIZE B SCALE: 5:16	
	ALL DIMENSIONS GREATER THAN 24.00 INCHES HAVE A TOLERANCE OF ± .063 IN UNLESS OTHERWISE SPECIFIED	SHEET 1 OF 2	

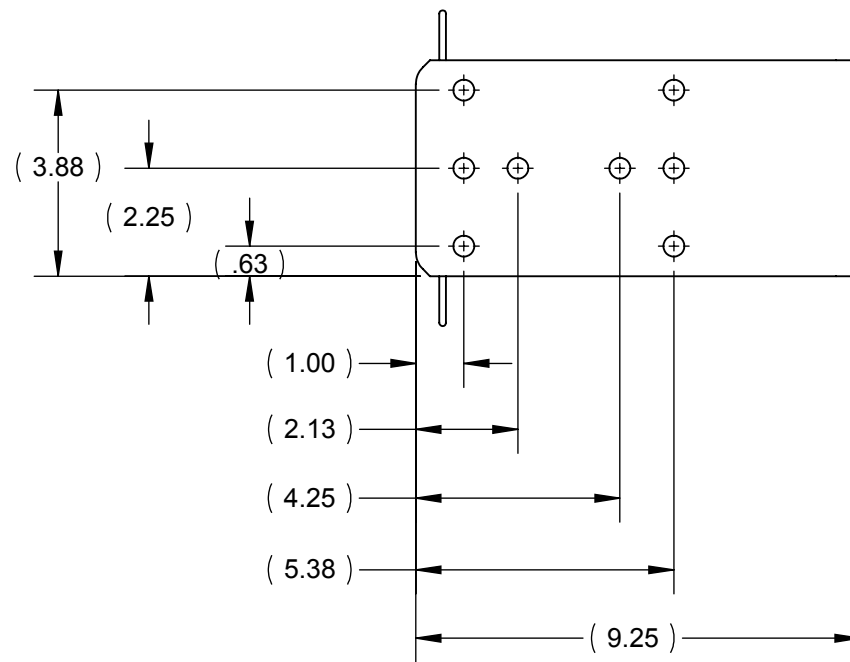


DRUM/ RATCHET ORIENTATION DETAIL

SEE NOTE 1



**SECTION A-A
SLIP RING ORIENTATION
NOTE 5**



STATUS: RELEASED	DESCRIPTION: REEL PR PBJ1608-50 L/D CBL FGK
ER NO. 65019	INTERPRET GEOMETRIC TOLERANCING PER: ASME Y14.5-1994
ER DATE: 07/27/2015	UNLESS OTHERWISE SPECIFIED PRIMARY UNITS ARE IN INCH POUND SECONDS SECONDARY UNITS IN MILLIMETERS KILOGRAMS SECONDS
ER ENGR: K COCHRAN	TOLERANCES ARE AS FOLLOWS
ER APPR: M BLAIR	DECIMAL: X.X ± 0.1 IN (2.5 MM)
DRAWN: M KAUFMAN	X.XX ± 0.03 IN (0.8 MM)
APPR: J PASA	X.XXX ± 0.010 (0.25 MM)
09/26/2014	ANG. ± 1°
	FRAC. ± 1/16
	THREAD CLASS: 2
	ALL DIMENSIONS GREATER THAN 24.00 INCHES HAVE A TOLERANCE OF ± .063 IN UNLESS OTHERWISE SPECIFIED
	PROPRIETARY AND CONFIDENTIAL
	This drawing and the information shown constitute trade secret and confidential property of Conductix-Wampler, Inc. It is subject to recall, and is loaned for use only in connection with the authorized manufacture or installation of Conductix-Wampler, Inc. products, and on the condition that it will be treated as confidential and will not be disclosed, published or reproduced in whole or in part, or permitted to be viewed or used by any other party, without specific written permission. Receipt and use of the drawing and information constitutes acceptance and agreement to the above.
	MATERIAL NO. 2:
	CONDUCTIX wamppler
	10102 F Street Omaha, NE 68127 800-521-4888
	3
SIZE B	SCALE: 1:4
	WEIGHT(REF): 59.71 LB
	MATL: --
	XA-552188
	SHEET 2 OF 2