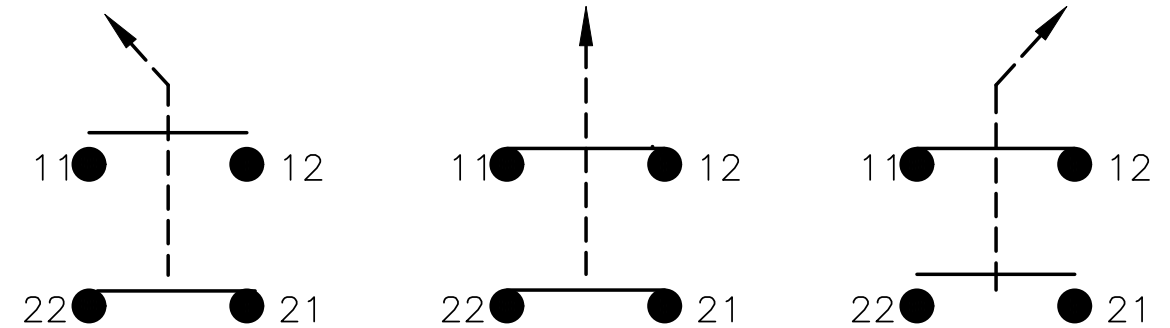
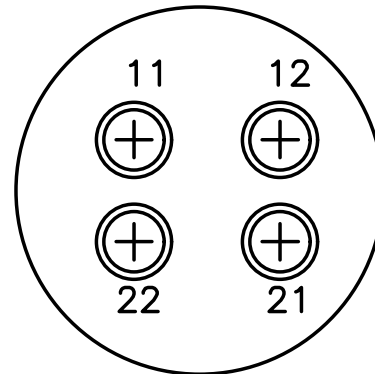
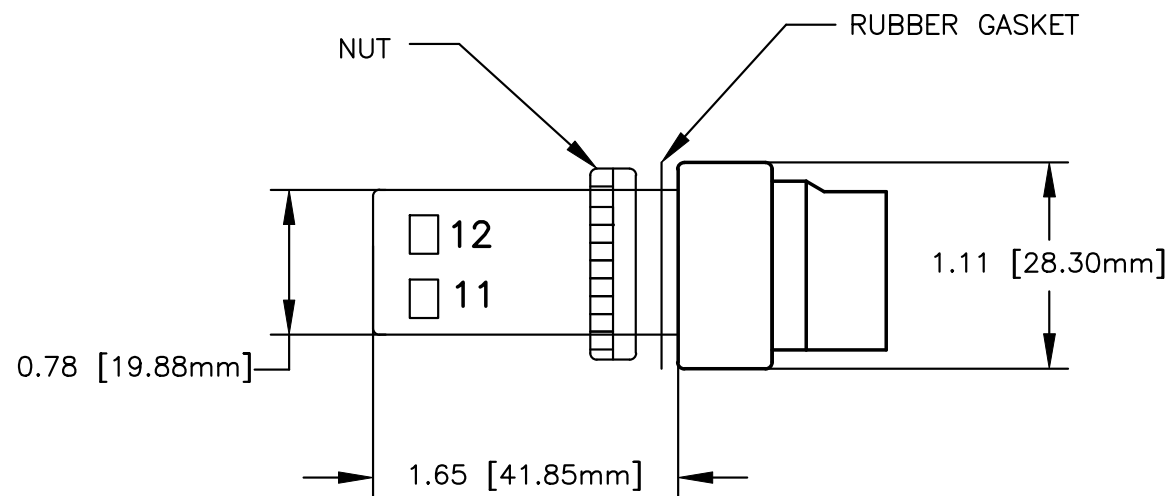


NOTES:

1. ABB PART NUMBER: C3SS210B-02
2. RATING
5A @ 120V
500,000 CYCLES
3. THIS SWITCH IS PART OF A UL LISTED ASSEMBLY, THERE ARE STRICT REQUIREMENTS FOR PLASTIC MATERIAL USED TO MANUFACTURE THIS PART. CHANGES TO SWITCH CONFIGURATION OR MATERIAL USED TO MANUFACTURE MUST BE PRE-APPROVED.
4. MATERIAL USED FOR THIS SWITCH MUST BE:
 - UL RECOGNIZED MATERIAL
 - MEET REQUIREMENTS OF UL50, PARAGRAPH 7
 - MEET REQUIREMENTS OF A CLASS 94-5VA MATERIAL

REV.	ECO NO.	REVISION DESCRIPTION	BY/DATE	APPD./DATE
0	14491	NEW RELEASE		
1	20978	UPDATED TO KITTED ITEM	KJC 9/13/04	JW 9/13/04
2	24738	UPDATED TO ABB PART	KJC 8/30/06	JS 8/30/06
3	32573	UPDATED GRAPHICS TO MATCH SWITCH	KJC 5/11/07	WJW 5/11/07
4	35652	REMOVED KITTED FROM DESCR; ADDED DP BACK	KJC 1/14/08	WJW 1/14/08



DEEP BACK ONLY

ITEM	PART NO.	DESCRIPTION	QTY.
MATERIAL:		BILL OF MATERIAL	
FINISH:		PROD.: PENDANTS PROJECT: SALES NO.:	
MATERIAL P/N:		DRAWING TITLE:	
<p>This drawing and the information shown is unpublished confidential property of Conductix Inc. Subject to recall, and is loaned for use only in connection with the authorized manufacture or installation of Conductix Inc. products, and on the condition that it will be treated as confidential and will not be disclosed, published or reproduced in whole or in part, or diverted to other uses, without specific written permission.</p>		<p>UNLESS OTHERWISE SPECIFIED DIMENSIONS ARE IN INCHES TOLERANCES ARE AS FOLLOWS: DECIMAL ANG. FRAC. .X = ±.060 ±1* ±1/16 .XX = ±.030 .XXX = ±.010 MINIMUM MACHINE SURFACE ✓</p>	
ENGINEER: J WILLIAMS 6/28/00		SCALE: NTS	SHEET: 1 OF 1
DRAWN: J HOLLOWAY 6/28/00		DWG. SIZE: B	PART NO.: 37111
CHECKED: J WILLIAMS 6/29/00		REV.: 4	
APPROVED: J WILLIAMS 6/29/00			