

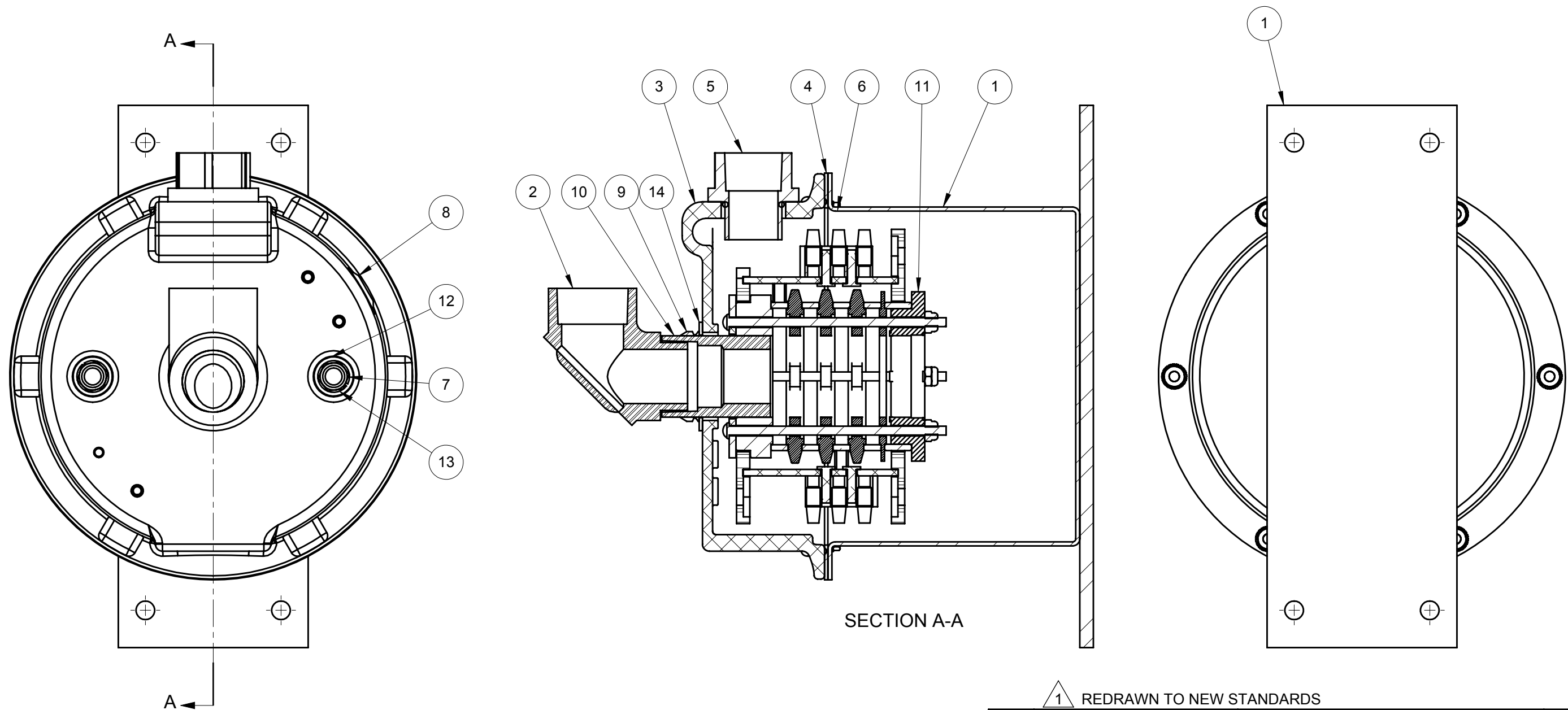
UNIT DESCRIPTIVE DATA

- RING 1: 35A, 600V, SINGLE COPPER GRAPHITE BRUSH, COPPER ALLOY RING W/ 10AWG GREEN TEW WIRE EXTENDING 24 INCHES FROM THE CORE. (GROUND RING).
- RINGS 2-4: 35A, 600V, SINGLE COPPER GRAPHITE BRUSHES, COPPER ALLOY RINGS W/ 10AWG BLACK TEW WIRE CORE LEADS EXTENDING 24 INCHES FROM CORE.

1 REDRAWN TO NEW STANDARDS

SEE SHEET 2 FOR BILL OF MATERIALS

STATUS: RELEASED		DESCRIPTION: SLIP RING 1.5B 35A 4C	
ER NO:	ECO-1041	UNLESS OTHERWISE SPECIFIED INTERPRET GEOMETRIC TOLERANCING PER: ASME Y14.5	
ER DATE:	01/11/2019	PRIMARY UNITS ARE IN INCH POUND SECONDS SECONDARY UNITS IN MILLIMETERS KILOGRAMS SECONDS	
ER ENGR:	K COCHRAN	TOLERANCES ARE AS FOLLOWS	
ER APPR:	K EASTMAN	DECIMAL: X.X ± 0.1 IN (2.5 MM) X.XX ± 0.03 IN (0.8 MM) X.XXX ± 0.010 (0.25 MM)	
DRAWN:	PJJ 10/06/1995	MINIMUM MACHINED SURFACE 250/	
APPR:	SGR 01/21/1997	ANG. ± 1° FRAC. ± 1/16 THREAD CLASS: 2 ALL DIMENSIONS GREATER THAN 24.00 INCHES HAVE A TOLERANCE OF ± .063 IN UNLESS OTHERWISE SPECIFIED	
MATERIAL NO. 2:		PROPRIETARY AND CONFIDENTIAL This drawing and the information shown constitute trade secret and confidential property of Conductix-Tampier, Inc. It is subject to recall, and is loaned for use only in connection with the authorized manufacture or installation of Conductix-Tampier, Inc. products, and on the condition that it will be treated as confidential and will not be disclosed, published or reproduced in whole or in part, or permitted to be viewed or used by any other party, without specific written permission. Receipt and use of the drawing and information constitutes acceptance and agreement to the above.	
SIZE B SCALE: 2:5		WEIGHT(REF): 9.48 LB MATL:	
CONDUCTIX wampier		10102 F Street Omaha, NE 68127 800-521-4888	
XA-VLS-D04		REV 1	
SHEET 1 OF 2			



1 REDRAWN TO NEW STANDARDS

ITEM	MATERIAL NO. 2	DESCRIPTION	QTY.	UNIT
14	XA-05453	WASHER THRUST VLRU USED IN UL LISTED	1	PC
13	XA-10043	WASHER 5/16 LK SPLIT PS	2	PC
12	XA-100229	WASHER 3/8 SEG NEO	2	PC
11	XA-VL-D04R	SLIP RING 1.5B 35A 4C	1	PC
10	XA-30036	SHAFT VSU 2.0 LG	1	PC
9	XA-400381	SEAL V-RING 1.42-1.50 SHAFT DIAMETER	1	PC
8	XA-03688	PLUG CAPLUG BPF 1/2	1	PC
7	XA-100509	NUT 5/16-18 HEX JAM PS	2	PC
6	XA-10363	NUT 10-32 KEPS GR5 PS	6	PC
5	XA-ST2	HUB .75 NPT MEYERS	1	PC
4	XA-PR55	GASKET RUBBER 7.500 OD X 6.218 ID	1	PC
3	XA-547537	ENTRANCE RING VL 1.5B	1	PC
2	XA-05554	ELBOW 1 MNPT X FNPT 90DEG	1	PC
1	XA-559296E	COVER VSU-SPEC SVB 4.57 LG NO DRAIN BK	1	PC

STATUS: RELEASED		DESCRIPTION: SLIP RING 1.5B 35A 4C	
ER NO. ECO-1041	UNLESS OTHERWISE SPECIFIED INTERPRET GEOMETRIC TOLERANCING PER ASME Y14.5	PROPRIETARY AND CONFIDENTIAL This drawing and the information shown constitute trade secret and confidential property of Conductix-Wampler, Inc. It is subject to recall, and is loaned for use only in connection with the authorized manufacture or installation of Conductix-Wampler, Inc. products, and on the condition that it will be treated as confidential and will not be disclosed, published or reproduced in whole or in part, or permitted to be viewed or used by any other party, without specific written permission. Receipt and use of the drawing and information constitutes acceptance and agreement to the above.	
ER DATE: 01/11/2019	PRIMARY UNITS ARE IN INCH POUND SECONDS SECONDARY UNITS ARE IN MILLIMETERS KILOGRAMS SECONDS TOLERANCES ARE AS FOLLOWS DECIMAL: X.X ± 0.1 IN (2.5 MM) X.XX ± 0.03 IN (0.8 MM) X.XXX ± 0.010 (0.25 MM) ANG. ± 1°		
ER ENGR: K COCHRAN	MINIMUM MACHINED SURFACE 250	MATERIAL NO. 2: XA-VLS-D04	
ER APPR: K EASTMAN	10/06/1995	REV 1	
DRAWN: PJJ	01/21/1997	WEIGHT(REF): 9.48 LB MATL:	
APPR: SGR		SIZE B SCALE: 1:2	

