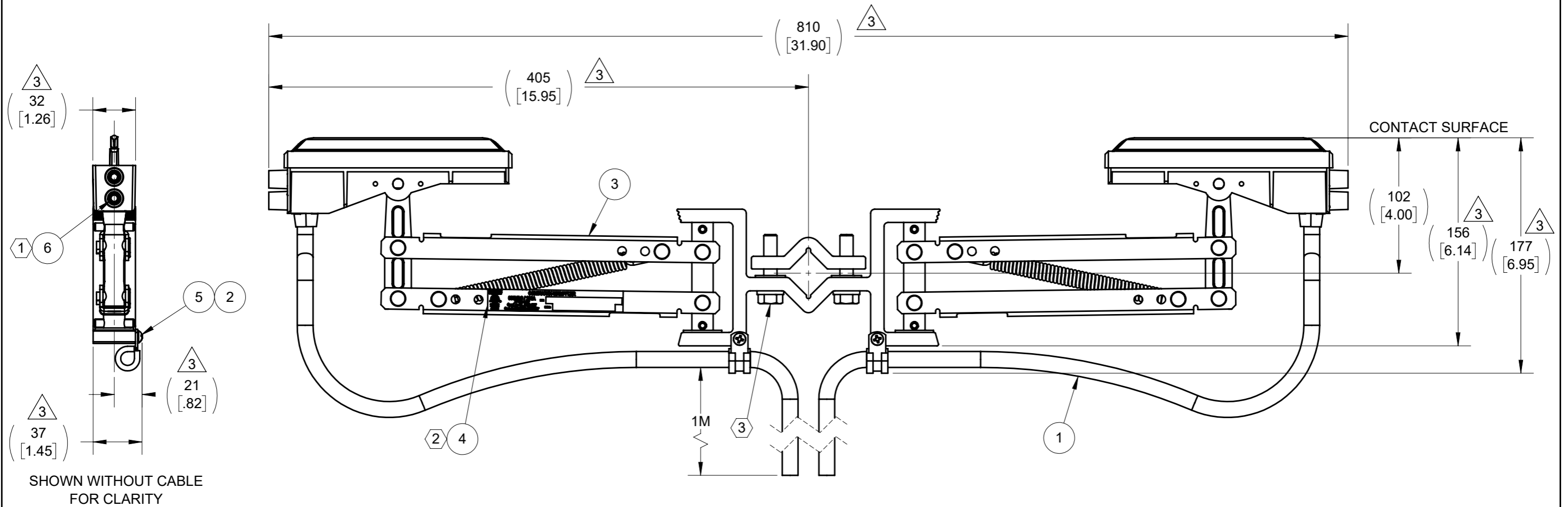


NOTES:

- 1 TORQUE TO 4.18 N-M (37 IN-LBS).
- 3 2 REMOVE ETL STICKER FROM COLLECTOR, IF PRESENT, AND REPLACE WITH ETL STICKER IN BOM.

INSTALLATION NOTES:

- 3 TORQUE TO 33.9 N-M (300 IN-LB)



SPECIFICATIONS

COLLECTOR SETTING HEIGHT	102.0 mm	4.00"
CONTACT FORCE AT SETTING HEIGHT	20-36 N	4.5-8.0 LBS
LATERAL WORKING RANGE	±63.5 mm	±2.50"
VERTICAL WORKING RANGE	+70.0 mm	+2.75"
	3 -31.7 mm	-1.25"
WEIGHT	5.0 Kg	11.0 LBS
MAXIMUM SPEED	270 M/MIN	900 FT/MIN
MAXIMUM CURRENT RATING	200A	200A
MAXIMUM CONTINUOUS WORKING TEMPERATURE	54 °C	130 °F
MINIMUM CONTINUOUS WORKING TEMPERATURE	-40 °C	-40 °F
MOUNTING SQUARE BAR SIZE	25.4 mm	1.00"
CABLE SIZE (EXTRA FLEXIBLE)	50 mm ²	#2 AWG
MAXIMUM SHOE WEAR	5.3 mm	.21"

3	6	XA-592665	SCREW SET M10-1.5 X 12 EXT TIP SST	2	PC
	5	XA-07735	SCREW 10-32 X .75 SELF-TAP SST	2	PC
	4	XA-591115	LABEL ETL FOR 200A SL2 COLL HARLAN	1	PC
	3	XA-SL2C-200T-0M	COLLECTOR 200A SL2 TANDEM	1	PC
	2	XA-589951	CLAMP CBL 7/16 IN ID X 1/2 IN W	2	PC
	1	XA-595421	CABLE 2AWG 1C 600V 1.4M LG	2	PC
	ITEM	MATERIAL NO. 2	DESCRIPTION	COMMENTS	QTY. UNIT

STATUS: RELEASED		DESCRIPTION: COLLECTOR SL2 200A TDM PHASE 1M	
ER NO:	ECO-28559	UNLESS OTHERWISE SPECIFIED	
ER DATE:	01/29/2021	INTERPRET GEOMETRIC TOLERANCING	
ER ENGR:	J NEUMANN	PER: ASME Y14.5	
ER APPR:	R FROST	PRIMARY UNITS ARE IN MM KG SECONDS	
DRAWN:	K COCHRAN	SECONDARY UNITS IN INCHES LB SECONDS	
DATE:	11/06/2020	TOLERANCES ARE AS FOLLOWS	
APPR:	K EASTMAN	DECIMAL:	
DATE:	11/06/2020	>1 <40 +/- 0.10	
		>40 <140 +/- 0.15	
		>140 <300 +/- 0.20	
		>300 <1000 +/- 0.50	
		ANG: ± 1°	
		THREAD CLASS: 6G EXTERNAL / 6H INTERNAL	
		ALL DIMENSIONS GREATER THAN 100MM HAVE A TOLERANCE OF ± 2MM UNLESS OTHERWISE SPECIFIED	
MATERIAL NO. 2:		X A-SL2C-200TP-1M	
SIZE A3	SCALE: 1:3	WEIGHT(REF): 3.35 KG	MAT'L:



3

SHEET 1 of 1