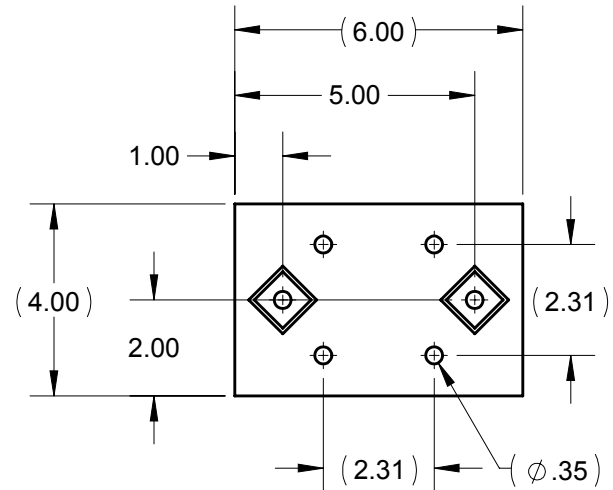
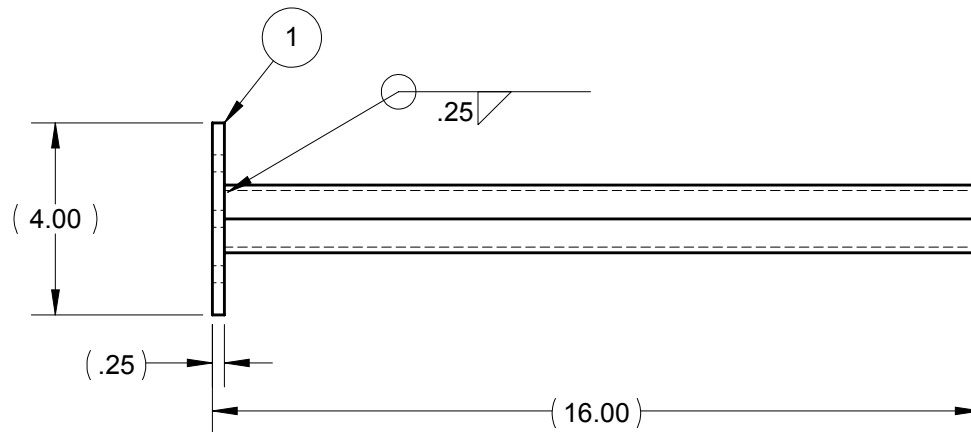
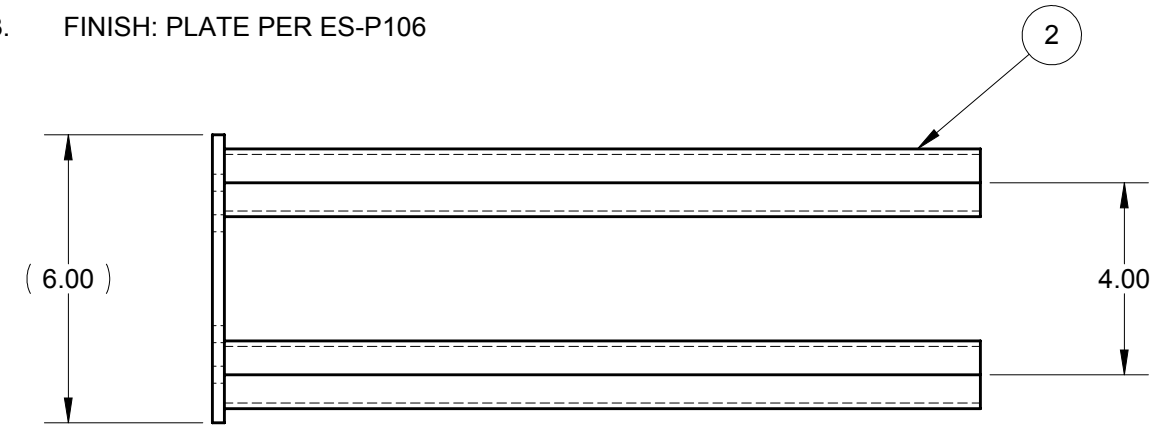


NOTES:

1. WELDS TO BE ELECTRIC ARC WELED
2. SURFACE TO BE FREE FROM ALL WELD SPLATTER
3. FINISH: PLATE PER ES-P106

7



2	XA-36864	SUPPORT ARM 1.00 SQ 15.75 LG	2	PC
1	XA-37995	PLATE 4X6 X 1/4 HRS	1	PC
ITEM	MATERIAL NO. 2	DESCRIPTION	QTY.	UNIT

STATUS: RELEASED		DESCRIPTION: BRACKET DBL COLL 1.00 SQ X 15.75 PS		
ER NO.	67422	INTERPRET GEOMETRIC TOLERANCING PER: ASME Y14.5-1994 UNLESS OTHERWISE SPECIFIED PRIMARY UNITS ARE IN INCH POUND SECONDS SECONDARY UNITS IN MILLIMETERS KILOGRAMS SECONDS TOLERANCES ARE AS FOLLOWS DECIMAL = X.X ± 0.1 IN (2.5 MM) X.XX ± 0.03 IN (0.8 MM) X.XXX ± 0.010 (0.25 MM) ANG. ± 1° FRACTION ± 1/16 THREAD CLASS: 2 ALL DIMENSIONS GREATER THAN 24.00 INCHES HAVE A TOLERANCE OF ± .063 IN UNLESS OTHERWISE SPECIFIED		
ER DATE:	03/01/2016	PROPRIETARY AND CONFIDENTIAL This drawing and the information shown constitute trade secret and confidential property of Conductix, Inc. It is subject to recall, and is loaned for use only in connection with the authorized manufacture or installation of Conductix, Inc. products, and on the condition that it will be treated as confidential and will not be disclosed, published or reproduced in whole or in part, or permitted to be viewed or used by any other party, without specific written permission. Receipt and use of the drawing and information constitutes acceptance and agreement to the above.		
ER ENGR:	J NEUMANN	MATERIAL NO. 2: XA-37863		
ER APPR:	M BLAIR	10102 F Street Omaha, NE 68127 800-521-4888		
DRAWN:	K JENSEN	REV 7		
APPR:	K JENSEN	SHEET 1 OF 1		
	06/18/2002	SIZE A SCALE: 1:4 WEIGHT(REF): 4.35 LB MAT'L:		
	06/20/2002			