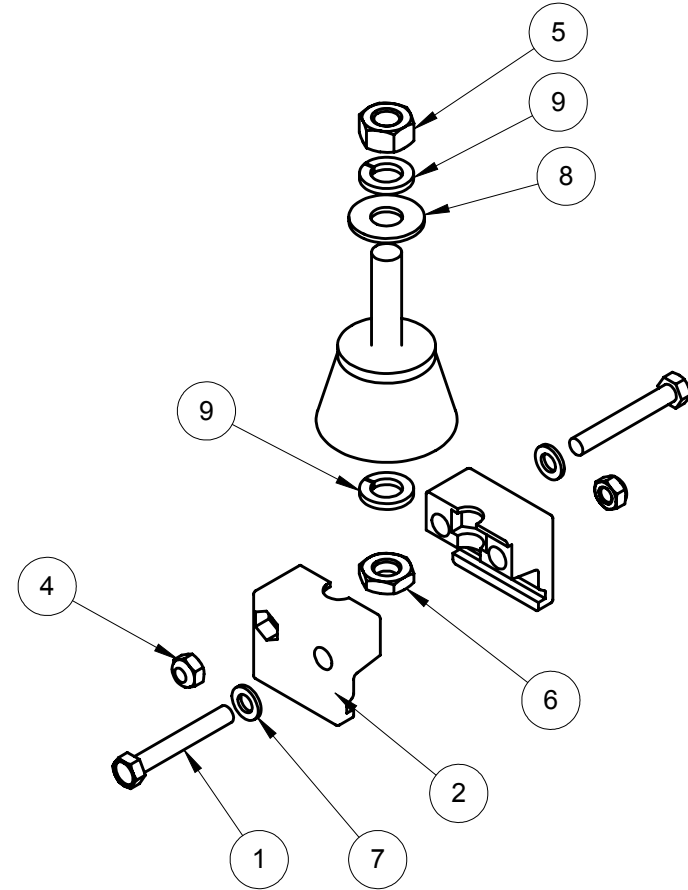
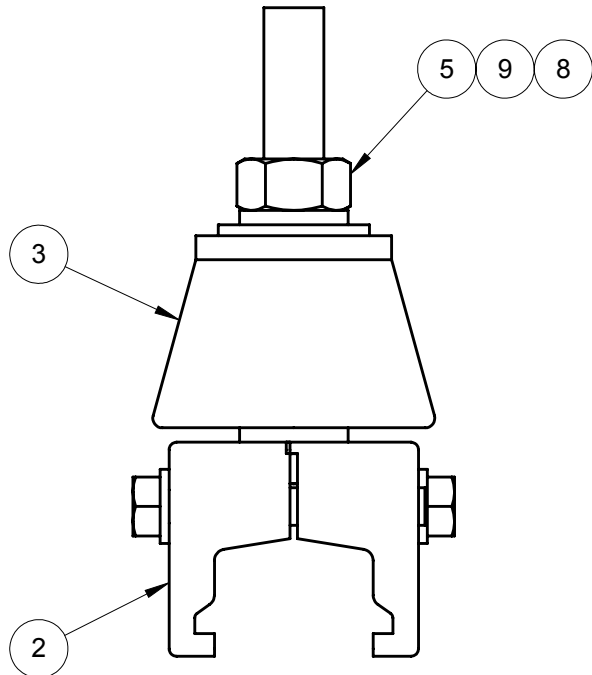


NOTES:

- TOP HARDWARE (XA-08085, XA-08076, AND XA-08077) WILL BE BAGGED, LABELED AND PLACED ON TOP OF HANGERS IN CONTAINER WITH QUANTITY REQUIRED.



9	XA-08077	WASHER M8 LK SST	2	PC
8	XA-08085	WASHER M8 FL 20 OD SST	1	PC
7	XA-07820	WASHER M5 FL SST	2	PC
6	XA-08846	NUT M8-1.25 HEX JAM SST	1	PC
5	XA-08076	NUT M8-1.25 HEX FIN SST	1	PC
4	XA-08809	NUT M5-.80 HEX LK SST	2	PC
3	XA-16424D	INSULATOR 1 LG HI HT SST RED M8 X 1.25	1	PC
2	XA-310830	CLAMP ANCHOR HALF	2	PC
1	XA-07819	BOLT M5-0.80 X 35 HEX SST	2	PC
ITEM	MATERIAL NO. 2	DESCRIPTION	QTY.	UNIT

STATUS: RELEASED		DESCRIPTION: ANCHOR CLP ASSY SST VALOX INS	
ER NO: 67270	INTERPRET GEOMETRIC TOLERANCING PER: ASME Y14.5-1994	PROPRIETARY AND CONFIDENTIAL	
ER DATE: 02/16/2016	UNLESS OTHERWISE SPECIFIED PRIMARY UNITS ARE IN INCH POUND SECONDS SECONDARY UNITS IN MILLIMETERS KILOGRAMS SECONDS	This drawing and the information shown constitute trade secret and confidential property of Conductix, Inc. It is subject to recall and is loaned for use only in connection with the authorized manufacture or installation of Conductix, Inc. products, and on the condition that it will be treated as confidential and will not be disclosed, published or reproduced in whole or in part, or permitted to be viewed or used by any other party, without specific written permission. Receipt and use of the drawing and information constitutes acceptance and agreement to the above.	
ER ENGR: J NEUMANN	DECIMAL =		
ER APPR: M BLAIR	XXX ± 0.1 IN (2.5 MM)	10102 F Street Omaha, NE 68127	
DRAWN: M SALAZAR	X.XX ± 0.03 IN (0.8 MM)	800-521-4888	
APPR: B WOMBACHER	X.XXX ± 0.010 (0.25 MM)	MATERIAL NO. 2: XA-52195	
	ANG. ± °	REV 3	
	FRACTION ± 1/16	WEIGHT(REF): 0.26 LB	
	THREAD CLASS: 2	MAT'L:	
	ALL DIMENSIONS GREATER THAN 24.00 INCHES HAVE A TOLERANCE OF ± .063 IN UNLESS OTHERWISE SPECIFIED	SIZE A SCALE: 1:1	SHEET 1 of 1