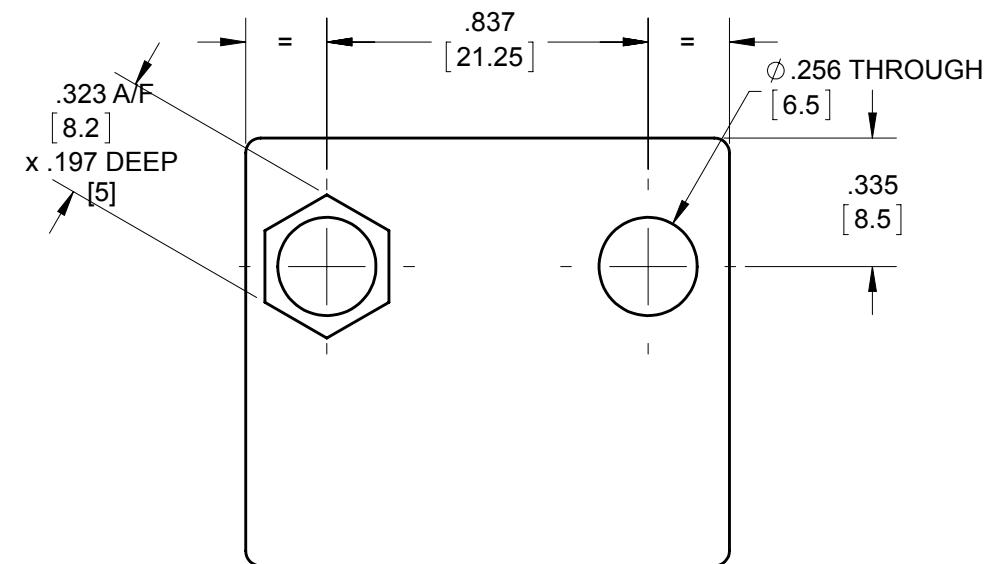
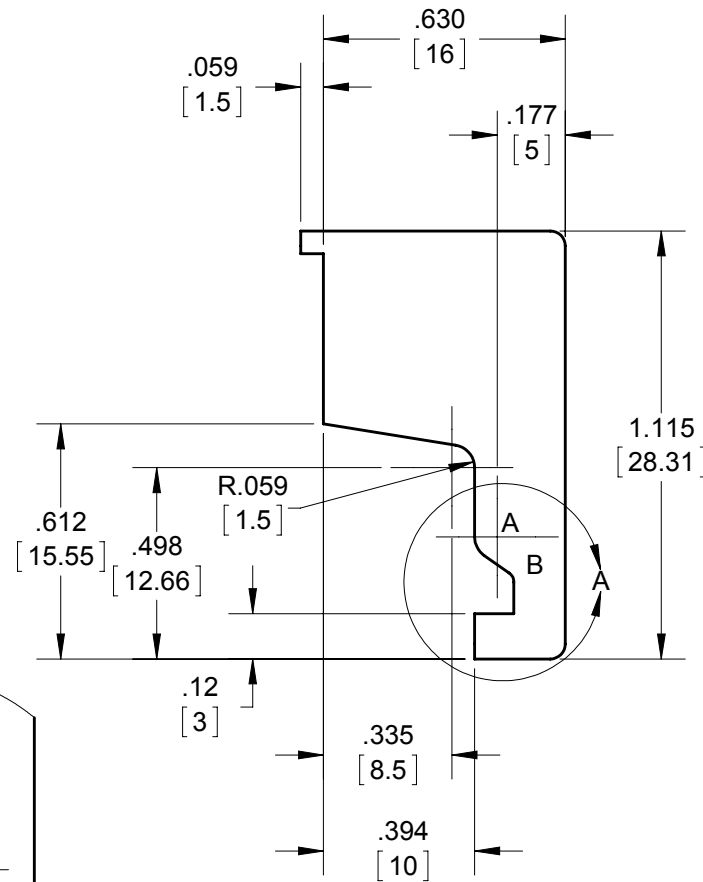
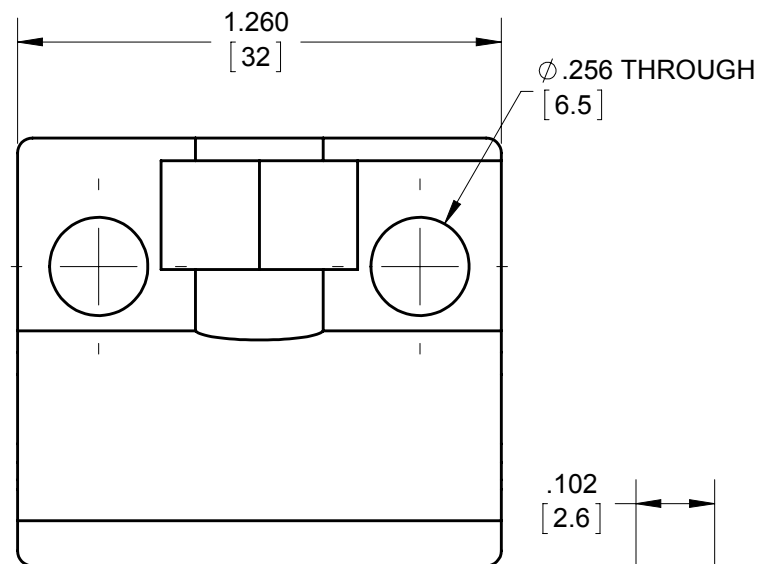
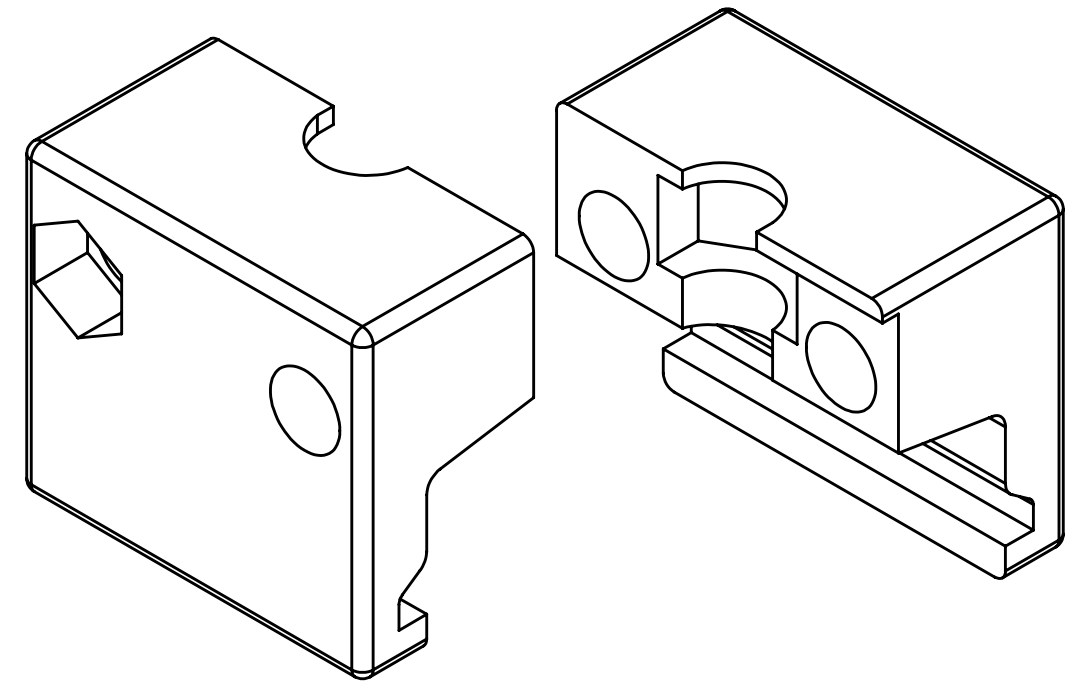
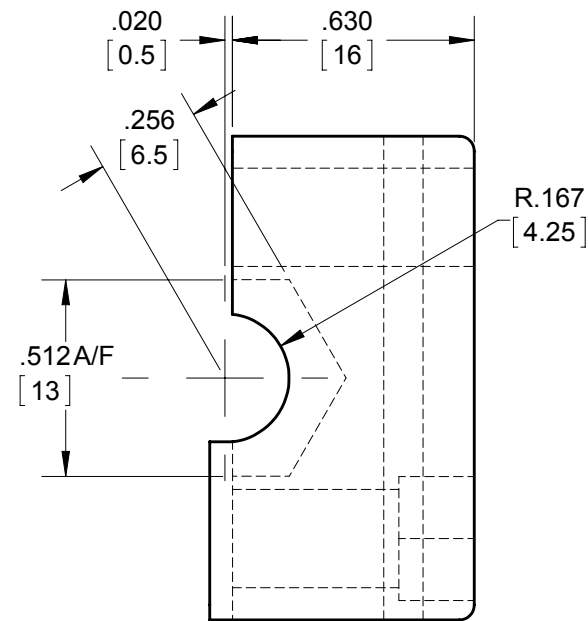


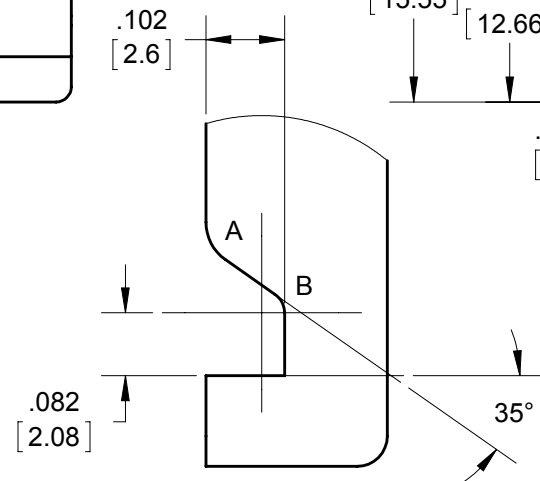
**NOTES:**

1. ALL ANGULAR TOLERANCES  $\pm 0.5^\circ$ .
2. PARTS TO BE FREE OF FINES COLD FLOW MARKS, VOIDS, ETC...
3. PARTS TO BE FREE AND CLEAN OF MOULD RELEASE OIL, DEBRIS, CONTAMINATION, ECT...
4. MAX. REGRIND 15% NO FINES.
5. ANY ALTERNATE MATERIAL MUST BE APPROVED BY CONDUCTIX ENGINEERING IN WRITING.
6. VENDOR MUST SUBMIT A FIRST ARTICLE SAMPLE TO CONDUCTIX QUALITY ENGINEER FOR WRITTEN FIRST ARTICLE APPROVAL.

RAW STOCK NO.	
TOOL NO.	1302
COLOR	BLACK
FINISH	SEE NOTES
WEIGHT	16g
MATERIAL	NYLON 6 - 50% GF 'JACKDAW'



A RAD - 0.059 [1.5]  
 B RAD - 0.029 [0.75]  
 ALL UNSPECIFIED RADII - 0.039 [1]



DETAIL A  
 SCALE 4 : 1

2 UPDATED GRAPHICS FOR CLARIFICATION  
 DUAL DIMENSION FOR STOCK SET UP

STATUS: <b>RELEASED</b>	DESCRIPTION: <b>CLAMP ANCHOR HALF</b>	<small>PROPRIETARY AND CONFIDENTIAL</small> 	<small>10102 F Street                  Omaha, NE 68127                  800-521-4888</small>
ER NO. 64129	<small>INTERPRET GEOMETRIC TOLERANCING PER: ASME Y14.5-1994</small> <small>UNLESS OTHERWISE SPECIFIED</small> <small>PRIMARY UNITS ARE IN INCH POUND SECONDS</small> <small>SECONDARY UNITS ARE IN MILLIMETERS KILOGRAMS SECONDS</small> <small>TOLERANCES ARE AS FOLLOWS</small> DECIMAL: XX ± 0.1 IN (2.5 MM) XXX ± 0.03 IN (0.8 MM) XXXX ± 0.010 (0.25 MM) ANG. ± 1° FRAC. ± 1/16 THREAD CLASS: 2 <small>ALL DIMENSIONS GREATER THAN 24.00 INCHES HAVE A TOLERANCE OF ± .063 IN UNLESS OTHERWISE SPECIFIED</small>		
ER DATE: 04/14/2015	<small>MINIMUM MACHINED SURFACE</small> 250	MATERIAL NO. 2:	REV
ER ENGR: M SALAZAR		XA-310830	2
ER APPR: B HIEBENTHAL		SCALE: 2:1	WEIGHT(REF): 0.01 KG
DRAWN: M POGGENSEE 12/19/2000		MATL: PA Type 6	SHEET 1 OF 1
APPR: J WILLIAMS 06/28/2001			