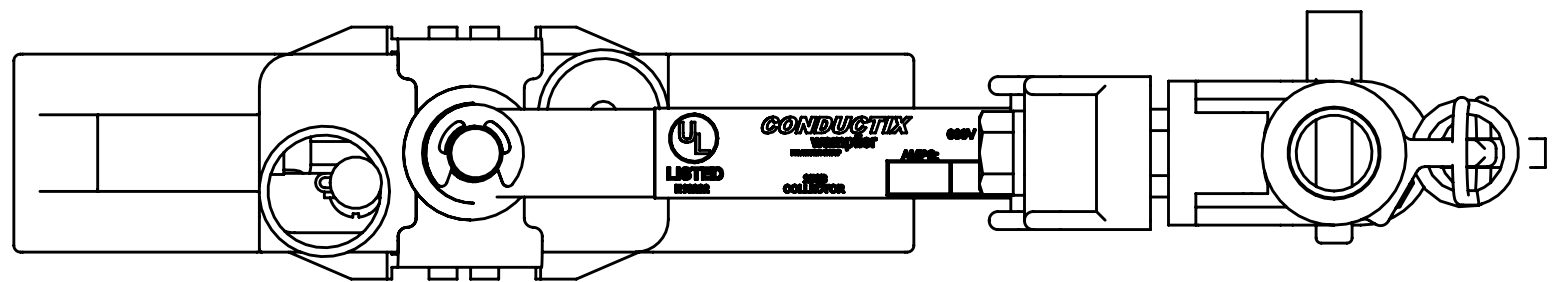
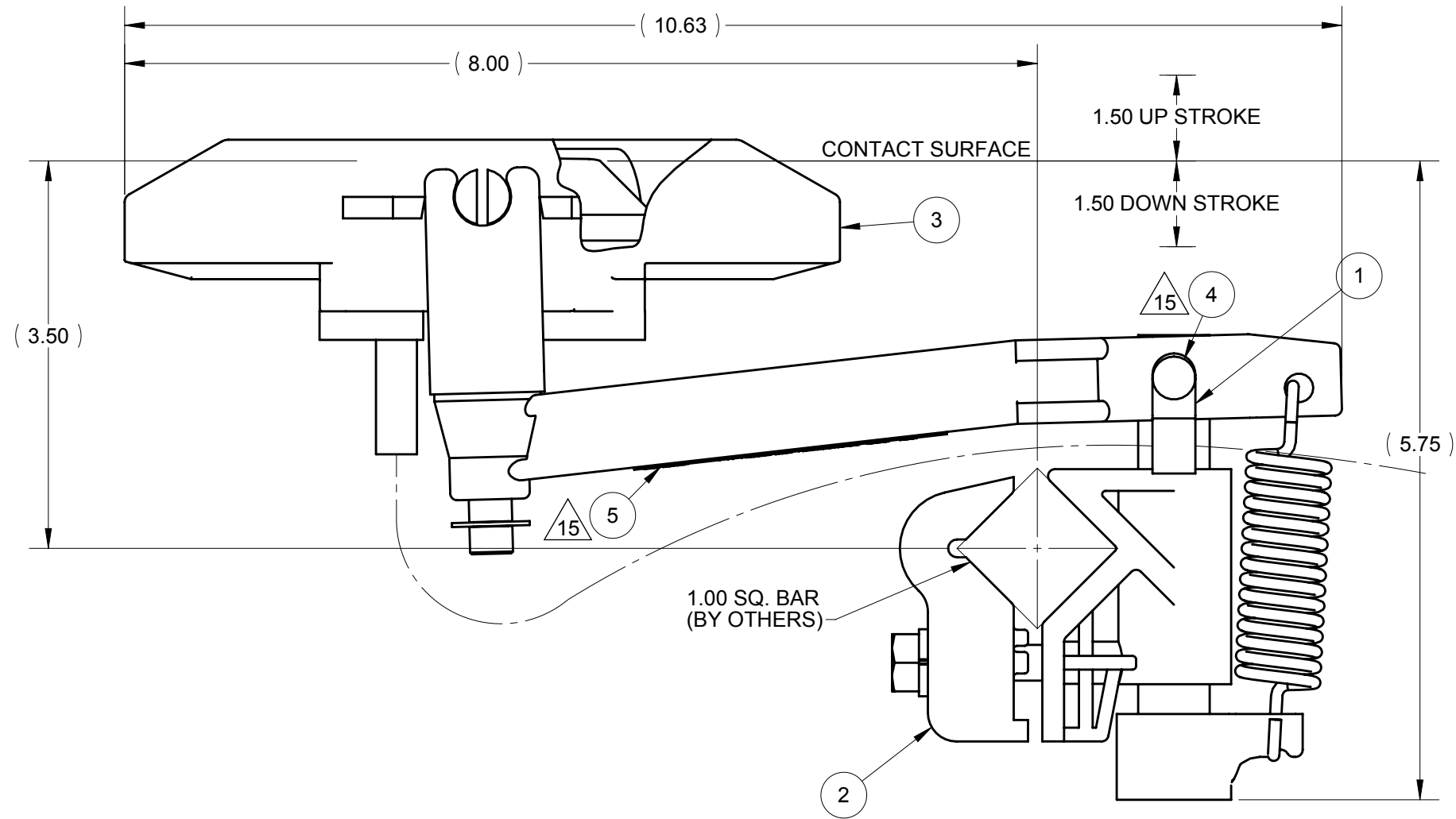


NOTES:

1. MAX. WIDTH OF COLLECTOR 1.75 (44.4mm).
2. RECOMMEND MOUNTING OF CONDUCTORS 2.00 MIN. ON CENTERS.
3. CONTACT PRESSURE AT SHOE WHEN MOUNTED TO BE 6-9 LBS.



BOTTOM VIEW
FOR STICKER PLACEMENT

ITEM	MATERIAL NO. 2	DESCRIPTION	QTY.	UNIT
5	XA-52751	STICKER STD UL COLL	1	PC
4	XA-537566	RIVET LRG FLG 1/8 X 3/8-.31 POP GRIP	1	PC
3	XA-13605Q	HEAD ASSY 100A J-HD 6AWG 21 IN LG PGTL	1	PC
2	XA-29550	COLLECTOR SUB ASSY	1	PC
1	XA-08770	CABLE CLAMP 3/8 X 3/8 NYL	1	PC

STATUS: RELEASED		DESCRIPTION: COLLECTOR 60A J-HD H-BSE	
ER NO:	50176	INTERPRET GEOMETRIC TOLERANCING PER: ASME Y14.5-1994	<small>PROPRIETARY AND CONFIDENTIAL</small> This drawing and the information shown constitute trade secret and confidential property of Conductix, Inc. It is subject to recall, and is loaned for use only in connection with the authorized manufacture or installation of Conductix, Inc. products, and on the condition that it will be treated as confidential and will not be disclosed, published or reproduced in whole or in part, or permitted to be viewed or used by any other party, without specific written permission. Receipt and use of the drawing and information constitutes acceptance and agreement to the above.
ER DATE:	07/26/2011	UNLESS OTHERWISE SPECIFIED PRIMARY UNITS ARE IN INCH POUND SECONDS SECONDARY UNITS IN MILLIMETERS KILOGRAMS SECONDS TOLERANCES ARE AS FOLLOWS	
ER ENGR:	L GARRETT	DECIMAL =	
ER APPR:	M MACDONALD	X.X ± 0.1 IN (2.5 MM) X.XX ± 0.03 IN (0.8 MM) X.XXX ± 0.010 (0.25 MM) ANG. ± 1° FRAC. ± 1/16 THREAD CLASS: 2	
DRAWN:	A FIELDS 02/20/1968	MINIMUM MACHINED SURFACE 250	 MATERIAL NO. 2: XA-13622 REV 15
APPR:	J CORL 06/20/1968	SIZE B SCALE: 3:4 WEIGHT(REF): 1.28 LB MAT'L:	

