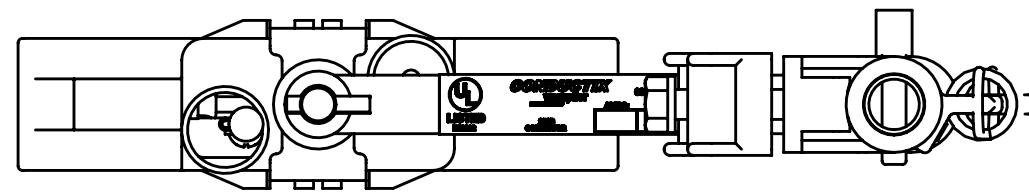
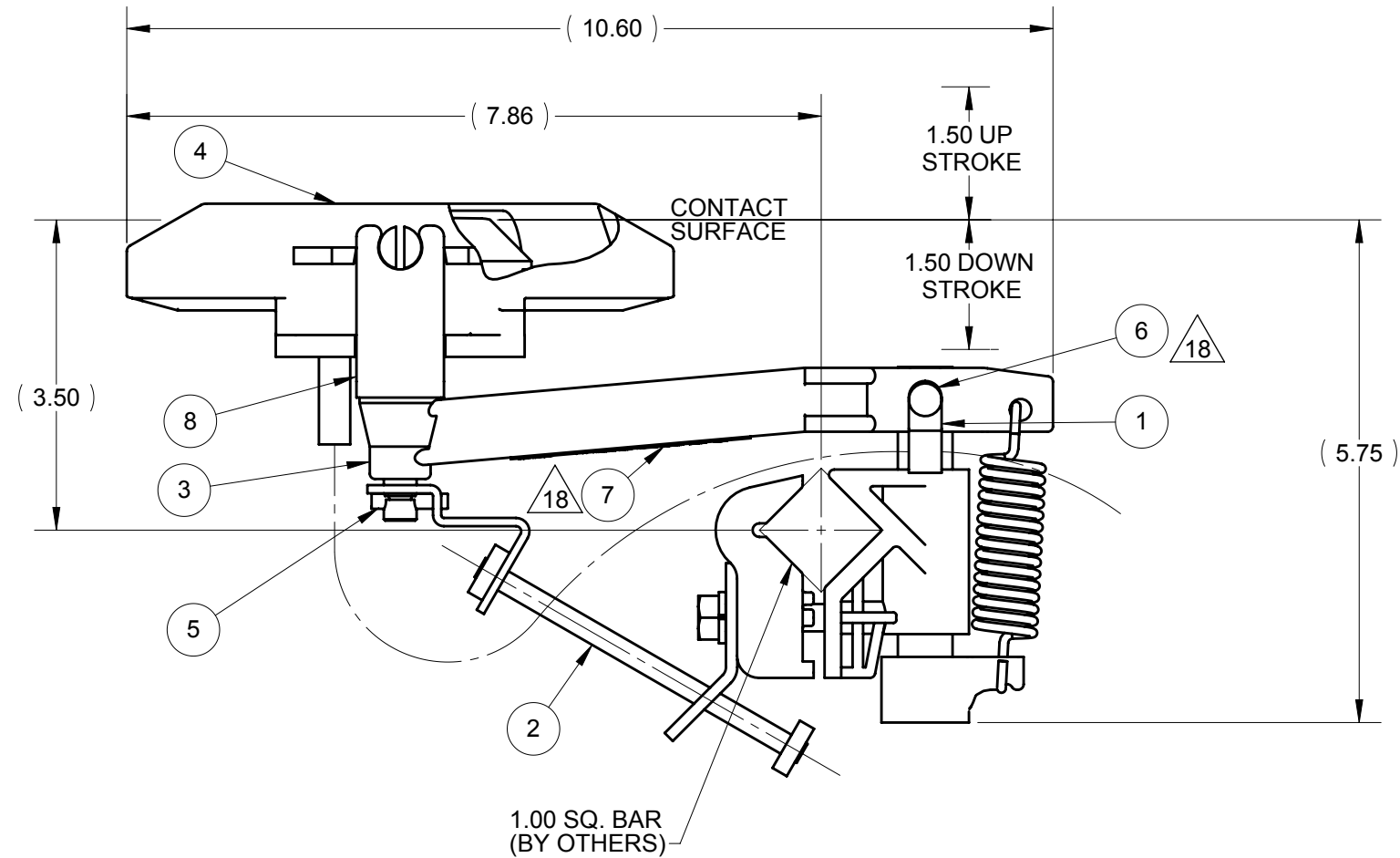


NOTES:

1. MAX. WIDTH OF COLLECTOR 1.75
2. RECOMMENDED MOUNTING OF CONDUCTORS 2.00 MIN ON CENTERS.
3. CONTACT PRESSURE AT SHOE WHEN MOUNTED TO BE 5 LBS.
4. REMOVE YOKE ASSEMBLY, XA-22575, FROM COLLECTOR SUB-ASSEMBLY, XA-29550, AND REPLACE WITH XA-11749.

SCRAP YOKE ASSEMBLY, XA-22575, AND RETAINING RING, XA-10848.



BOTTOM VIEW FOR STICKER PLACEMENT
(XA-11667 REMOVED FOR CLARITY)

ITEM	MATERIAL NO. 2	DESCRIPTION	QTY.	UNIT
8	XA-11749	YOKE PIN DR H-BSE J-HD COLL SS	1	PC
7	XA-52751	STICKER STD UL COLL	1	PC
6	XA-537566	RIVET LRG FLG 1/8 X 3/8-.31 POP GRIP	1	PC
5	XA-10215	PIN 3/16 X 7/8 ROLLSST	1	PC
4	XA-13605Q	HEAD ASSY 100A J-HD 6AWG 21 IN LG PGTL	1	PC
3	XA-29550	COLLECTOR SUB ASSY	1	PC
2	XA-11667	COLLECTOR SLFCTR H-BSE	1	PC
1	XA-08770	CABLE CLAMP 3/8 X 3/8 NYL	1	PC

STATUS: RELEASED		DESCRIPTION: COLLECTOR 60A J-HD H-BSE SLFCTR	
ER NO. 50176	INTERPRET GEOMETRIC TOLERANCING PER: ASME Y14.5-1994	<small>PROPRIETARY AND CONFIDENTIAL</small> This drawing and the information shown constitute trade secret and confidential property of Conductix, Inc. It is subject to recall, and is loaned for use only in connection with the authorized manufacture or installation of Conductix, Inc. products, and on the condition that it will be treated as confidential and will not be disclosed, published or reproduced in whole or in part, or permitted to be viewed or used by any other party, without specific written permission. Receipt and use of the drawing and information constitutes acceptance and agreement to the above.	
ER DATE: 07/26/2011	UNLESS OTHERWISE SPECIFIED PRIMARY UNITS ARE IN INCH POUND SECONDS SECONDARY UNITS IN MILLIMETERS KILOGRAMS SECONDS TOLERANCES ARE AS FOLLOWS		
ER ENGR: L GARRETT	DECIMAL = X.X ± 0.1 IN (2.5 MM) X.XX ± 0.03 IN (0.8 MM) X.XXX ± 0.010 (0.25 MM)	10102 F Street Omaha, NE 68127 800-521-4888	MATERIAL NO. 2: XA-13623 REV 18
ER APPR: M MACDONALD	MINIMUM MACHINED SURFACE 250		
DRAWN: A FIELDS 02/20/1968	ANG. ± 1°	SIZE B SCALE: 1:2	WEIGHT(REF): 1.47 LB
APPR: J CORL 06/20/1968	FRAC. ± 1/16	MAT'L:	SHEET 1 OF 1
	THREAD CLASS: 2		