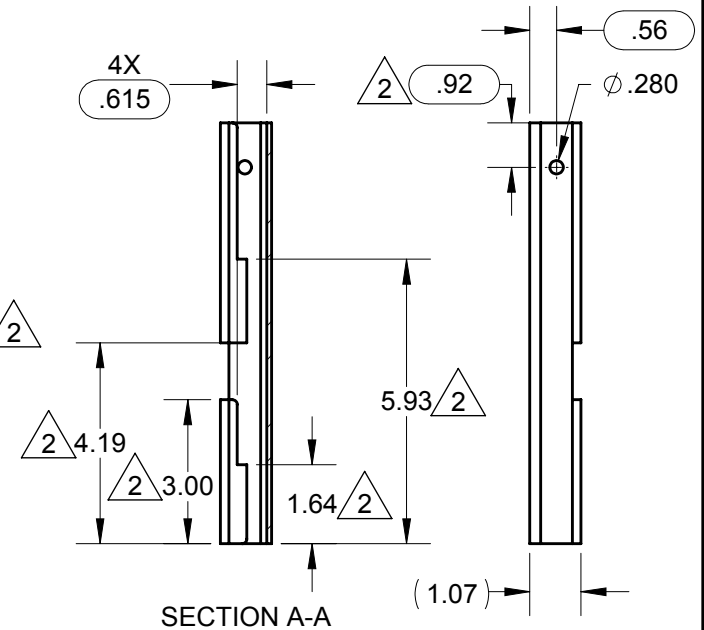
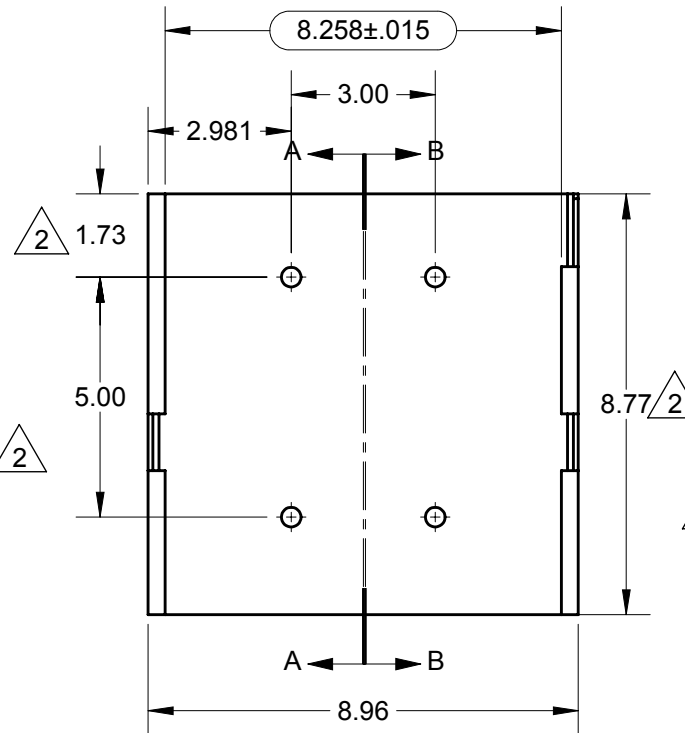
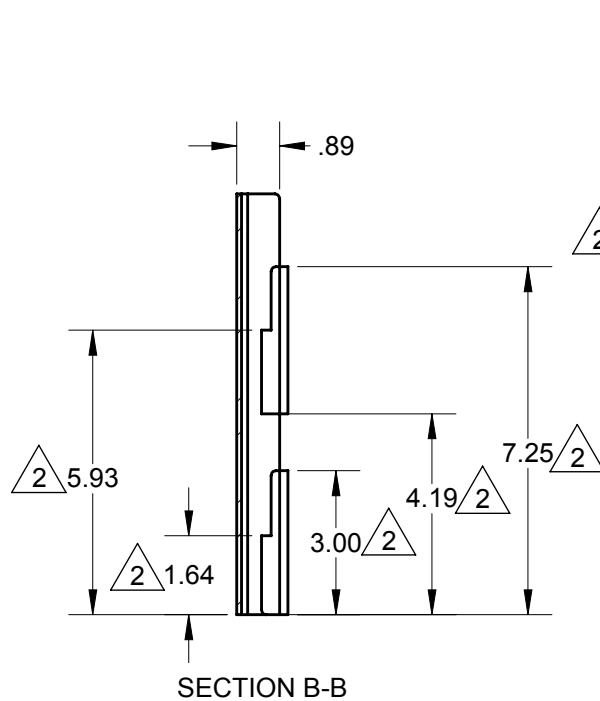
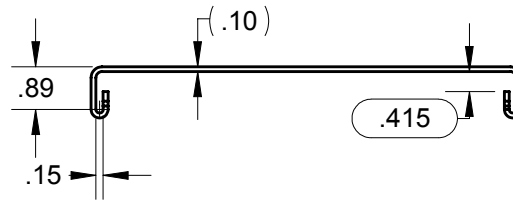


NOTES:

1. MATERIAL: 12GA SHEET HRS
2. BREAK AND DEBURR SHARP EDGES.
3. POWDER COAT WHITE PER ES-P105.



STATUS: RELEASED		DESCRIPTION: BASE VERSAREEL BLUE QUICK MOUNT	
ER NO:	ECO-3307	UNLESS OTHERWISE SPECIFIED INTERPRET: GEOMETRIC TOLERANCING PER: ASME Y14.5	
ER DATE:	03/06/2019	PRIMARY UNITS ARE IN INCH POUND SECONDS SECONDARY UNITS IN MILLIMETERS KILOGRAMS SECONDS	
ER ENGR:	J SMITH	TOLERANCES ARE AS FOLLOWS	
ER APPR:	K EASTMAN	DECIMAL = X.X ± 0.1 IN (2.5 MM) X.XX ± 0.03 IN (0.8 MM) X.XXX ± 0.010 (0.25 MM) ANG. ± 1° FRACTION ± 1/16	
DRAWN:	J SMITH	05/31/2018	MINIMUM MACHINED SURFACE 250
APPR:	D SAMPSON	05/31/2018	THREAD CLASS: 2 ALL DIMENSIONS GREATER THAN 24.00 INCHES HAVE A TOLERANCE OF ± .063 IN UNLESS OTHERWISE SPECIFIED
MATERIAL NO. 2:		PROPRIETARY AND CONFIDENTIAL This drawing and the information shown constitute trade secret and confidential property of Conductix, Inc. It is subject to recall, and is loaned for use only in connection with the authorized manufacture or installation of Conductix, Inc. products, and on the condition that it will be treated as confidential and will not be disclosed, published or reproduced in whole or in part, or permitted to be viewed or used by any other party, without specific written permission. Receipt and use of the drawing and information constitutes acceptance and agreement to the above.	
SIZE A SCALE: 1:4		WEIGHT (REF): 2.86 LB MAT'L: AISI 1018 Steel, CF	
CONDUCTIX wampler		10102 F Street Omaha, NE 68127 800-521-4888	
XA-583748		REV 2	
SHEET 1 OF 1			