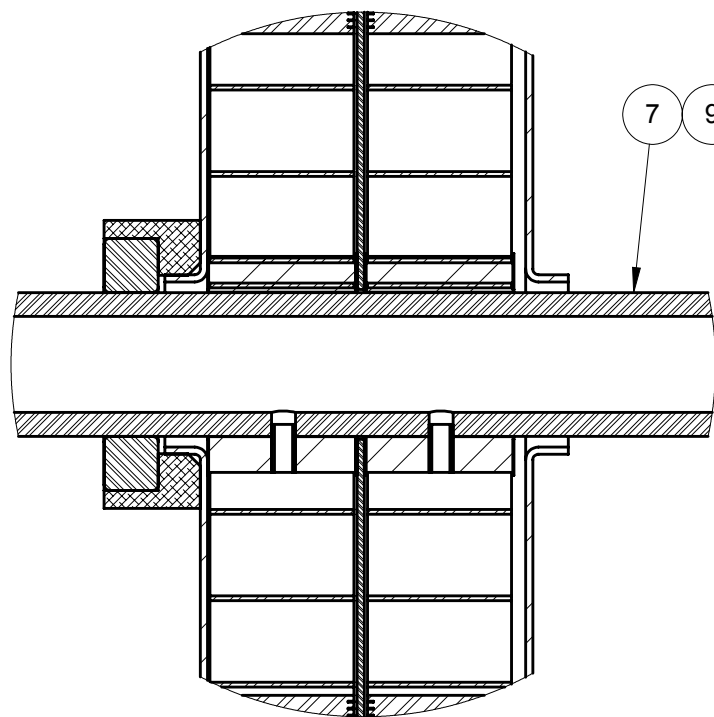
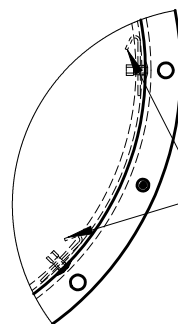
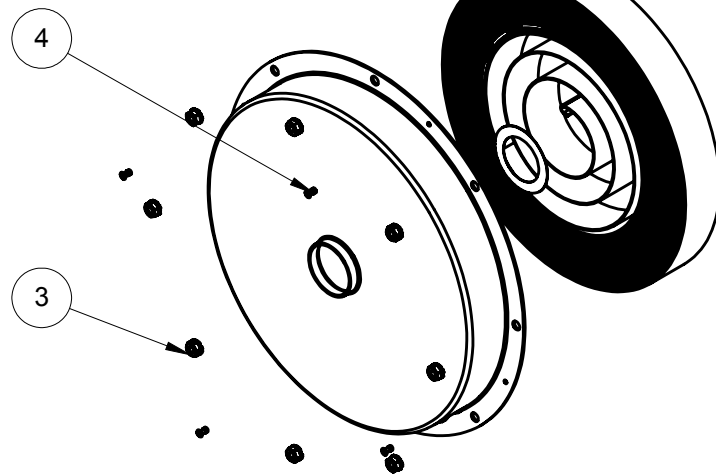
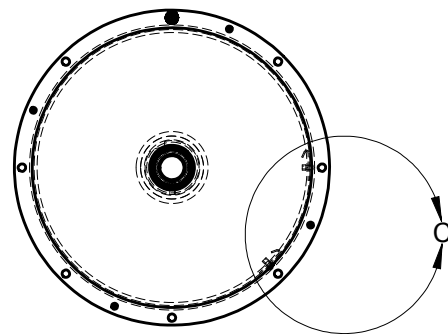
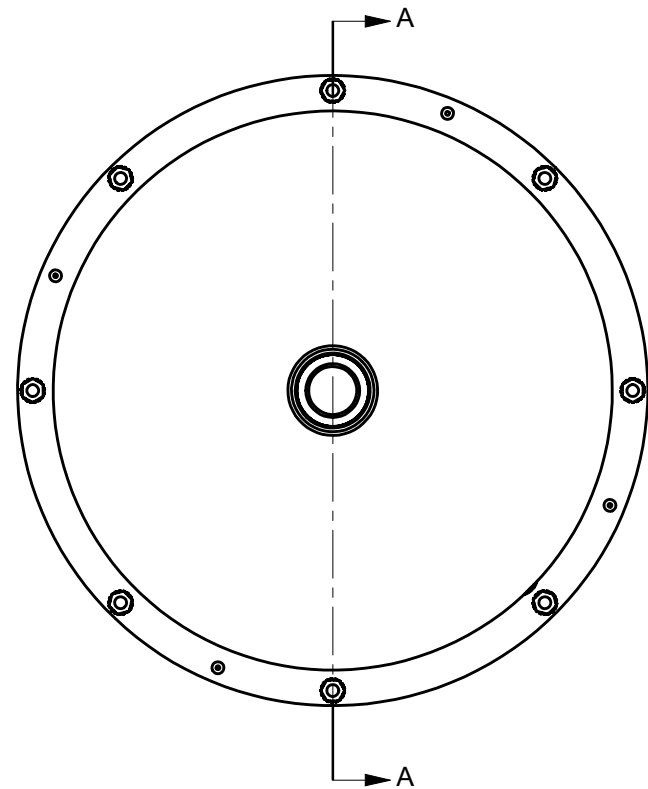


SECTION A-A  
SCALE 1 : 4



DETAIL B  
SCALE 1 : 2



CLIP ORIENTATION  
(SPRING HIDDEN FOR CLARITY)

DETAIL C  
SCALE 1 : 4

5 UPDATE TO SOLIDWORKS

10	XA-40236B	SPRING CANISTER 1.5IN FROM SIDE W/SPRG	1	PC
9	XA-40236D	SPRING CANISTER 1.5IN SPL SIDE W/SPRG	1	PC
8	XA-40246	SPRING .62 X 1.5 X 675 NO PARTS SALES	2	PC
7	XA-40265	SHAFT COLLAR ASSY 1.5 PARALLEL 19/2400	1	PC
6	XA-40245	SEPARATOR PL PARALLEL 19/2400	1	PC
5	XA-09995	SCREW 1/4-20 X .63 PHP PS	8	PC
4	XA-10327Z	RIVET 1/8 X 3/16 STL BLIND 43	4	PC
3	XA-08387	NUT 1/4-20 HEX KEPS PS	8	PC
2	XA-40233	GASKET SPONGE 13.120 OD X 11.880 ID	1	PC
1	XA-40235	BEARING THRUST 0.010 19/2400	4	PC
ITEM	MATERIAL NO. 2	DESCRIPTION	QTY.	UNIT

STATUS: RELEASED		DESCRIPTION: SPRING MOTOR PARALLEL E KIT			
ER NO.	56773	INTERPRET GEOMETRIC TOLERANCING PER: ASME Y14.5-1994			
ER DATE:	04/03/2013	UNLESS OTHERWISE SPECIFIED PRIMARY UNITS ARE IN INCH POUND			
ER ENGR:	S JOHANEK	SECONDARY UNITS IN MILLIMETERS KILOGRAMS SECONDS			
ER APPR:	D SAMPSON	TOLERANCES ARE AS FOLLOWS			
DRAWN:	S JOHANEK	04/03/2013	DECIMAL: .X.X ± 0.1 IN [2.5 MM]	MINIMUM 250 MACHINED SURFACE	PROPRIETARY AND CONFIDENTIAL
APPR:	D SAMPSON	04/03/2013	X.XX ± 0.03 IN [0.8 MM]		This drawing and the information shown constitute trade secret and confidential property of Conductix, Inc. It is subject to recall, and is loaned for use only in connection with the authorized manufacture or installation of Conductix, Inc. products, and on the condition that it will be treated as confidential and will not be disclosed, published or reproduced in whole or in part, or permitted to be viewed or used by any other party, without specific written permission. Receipt and use of the drawing and information constitutes acceptance and agreement to the above.
			X.XXX ± 0.010 [0.25 MM]		
			ANG. ± 1°		
			FRAC. ± 1/16		
			THREAD CLASS: 2		
		MATERIAL NO. 2:		XA-40248-1K	
		SIZE B		SCALE: 1:6	
		WEIGHT(REF): 61.45 LB		MAT'L: --	
				SHEET 1 OF 1	