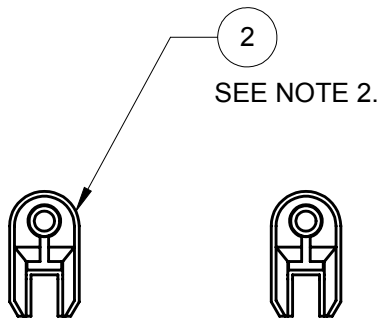
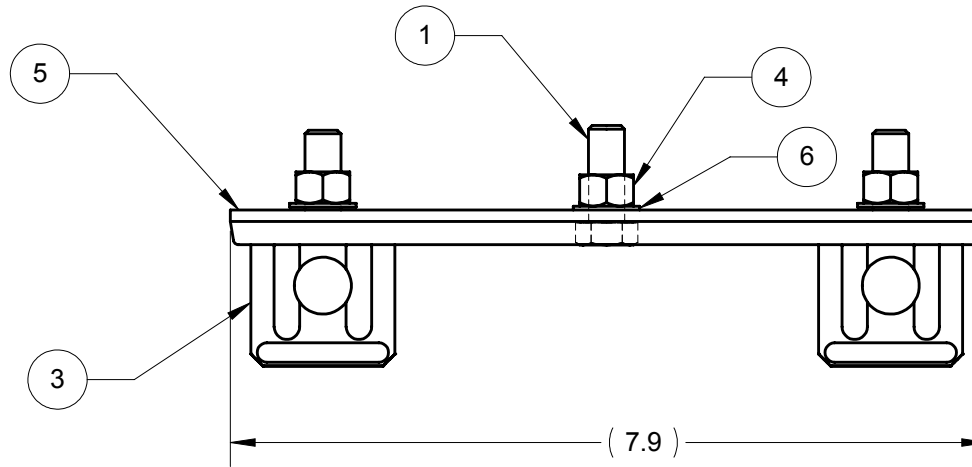
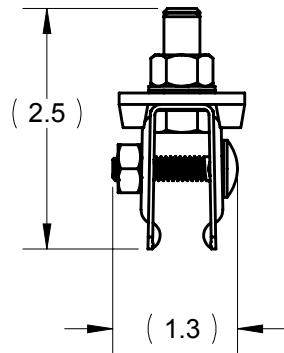
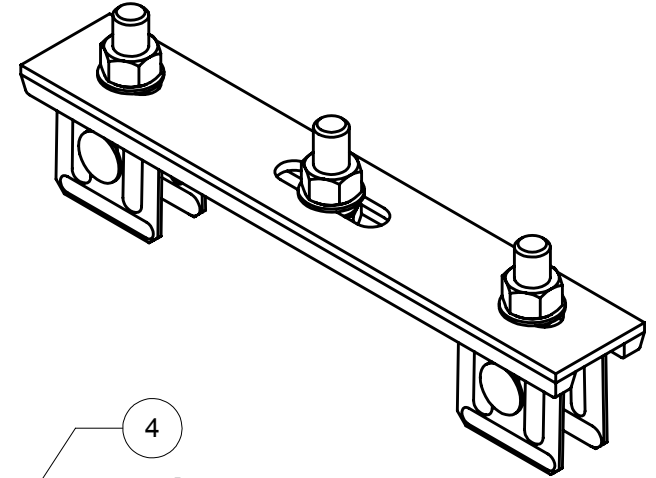


NOTES:

1. ASSEMBLY HANGERS AND MOUNTING BOLTS TO PLATE AS SHOWN. FINGER TIGHT.
2. KIT GUIDE ASSY ALONG WITH END CAPS TOGETHER IN BAG.
3. LABEL BAG WITH P/N 3035354 - XA-CG100.



3	6	XA-08392	WASHER 3/8 LK INT PS	1	PC
	5	XA-100G	PLATE GUIDE AL	1	PC
	4	XA-10077	NUT 3/8-16 HEX PS	1	PC
	3	XA-100H	HANGER CLP ASSY STL C-BAR	2	PC
	2	XA-CN100	END CAP C-BAR	2	PC
	1	XA-BL037HH100CST	BOLT 3/8-16 X 1.00 HEX PS	1	PC
	ITEM	MATERIAL NO. 2	DESCRIPTION	QTY.	UNIT

STATUS: <b>RELEASED</b>		DESCRIPTION: <b>GUIDE ASSY ISO KIT C-BAR</b>	
ER NO: 57192	INTERPRET GEOMETRIC TOLERANCING PER: ASME Y14.5-1994	PROPRIETARY AND CONFIDENTIAL	
ER DATE: 05/09/2013	UNLESS OTHERWISE SPECIFIED	<small>This drawing and the information shown constitute trade secret and confidential property of Conductix, Inc. It is subject to recall, and is loaned for use only in connection with the authorized manufacture or installation of Conductix, Inc. products, and on the condition that it will be treated as confidential and will not be disposed, published or reproduced in whole or in part, or permitted to be viewed or used by any other party, without specific written permission. Receipt and use of the drawing and information constitutes acceptance and agreement to the above.</small>	
ER ENGR: W HAUPTS	PRIMARY UNITS ARE IN INCH POUND SECONDS SECONDARY UNITS IN MILLIMETERS KILOGRAMS SECONDS		
ER APPR: M MACDONALD	TOLERANCES ARE AS FOLLOWS		
DRAWN: S MONSON 06/02/2010	DECIMAL = X.X ± 0.1 IN (2.5 MM) X.XX ± 0.03 IN (0.8 MM) X.XXX ± 0.010 (0.25 MM)		
APPR: MACDONALD 06/02/2010	ANG. ± 1/16		
	THREAD CLASS: 2	MATERIAL NO. 2: <b>XA-CG100</b>	
SIZE <b>A</b> SCALE: 1:2		WEIGHT(REF): 0.65 LB	REV <b>3</b>
MAT'L: --			SHEET 1 OF 1

